



BETHANIAN

1959



LEIGHAM  
COLLEGE  
1907

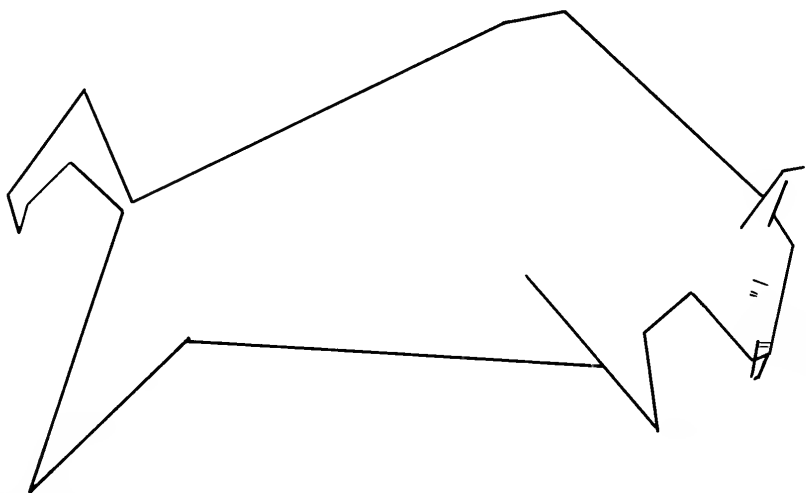


Digitized by the Internet Archive  
in 2011 with funding from  
LYRASIS Members and Sloan Foundation

<http://www.archive.org/details/bethanian1959beth>

# BETHANIAN '59

BETHANY COLLEGE, BETHANY, WEST VA.



PHIL COCCO  
PETE PERRY  
MIKE BARRETT  
CINAY VORGENSEN  
BOB WEUSTER  
MIKE HERWITT  
GEORGE GAY  
SUE ANN BROWNE

EDITOR  
BUSINESS MANAGER  
ASSISTANT EDITOR  
ART EDITOR  
SENIOR EDITOR  
FEATURE EDITOR  
SPORTS EDITOR  
COPY EDITOR

# *A Bethanian*

A wise Quaker named Tom Jones asked me, "What is a Bethanian?" This called for a deep and wise answer. Tom Jones knows colleges with as much intimate experience as Winston Churchill knows England. He was asking me to describe the ideal graduate of Bethany College—the person who is a modern edition of the simple faith, the bold reason, the sturdy individualism, the stubborn freedom, the social responsibility, and the private initiative of Alexander Campbell who founded the college and marked its destiny in American Affairs. This was a tough assignment which could not be ignored or evaded, for whoever heard of an outstanding college which had no clear image of its ideal product? After a month of pondering, here is my best answer.

Intelligence disciplined into wisdom; independent judgment and social courage which liberate a person from conformist tyrannies in order that he can become an autonomous personality who has earned a sense of quiet dignity; citizenship which accepts responsibility in human affairs, ranging all the way from cultured conduct in relations with family and friends on up to vast national and international dimensions; vibrant energy which derives from well managed health with a balance of absorbing play which requires no rationalized defense; and an informed faith which defines a person as a unique child of God:—these are five hallmarks of a Bethanian.

## 1. AN APPETITE FOR LEARNING AND AN ARDENT LOVE OF WISDOM (Disciplined Intelligence)

Only the intelligent can enter Bethany and only those who practice mental discipline can graduate. The pursuit and achievement of knowledge is basic, but decisions based on that knowledge constitute a life. Knowledge in action, which discerns and pursues worthy goals, can become wisdom. A Bethanian may not be wise, but he must love wisdom. In this classic sense, a Bethanian is a philosopher.

## 2. A FREE PERSON (Integrity)

A true Bethanian can never be a conformist. The exercised right of private judgment is indigenous to the college. Only the person who has enough self esteem to make up his own mind and chart his own course has earned the right to human dignity. A free man

has courage to stand alone, if need be, for what he believes to be right and good. He can join with his fellows in an enterprise of voluntary cooperation without allowing any party, association, union, coterie, demagogue or other collectivist influence to enslave his mind. A Texan had this spirit when he said, "I am a member of the Democratic Party, but I don't belong to it!"

### 3. A RESPONSIBLE CITIZEN (Character)

Appropriate dress and appealing manners are Bethany ingredients of responsible citizenship. Character, however, implies far more than these. A worthy Bethanian brings a constructive attitude and influence which can be described as a "vocation" into a home, a community, a region, a nation, and a total society. He is a part of the solution rather than part of the problem. He is a participant rather than a carping spectator. He contributes to the "domestic tranquility" and "promotes the general welfare" by his effective action as well as by his vote. He aspires to exemplify Plato's maxim—"A kingly man is a living law."

### 4. A DYNAMO OF ENERGY (Health)

Not every Bethanian is an athlete, but each one is as physically fit as his inventory of health will allow. Energy is the *sine qua non* for achievement in academics, business, politics, industry, the professions, or any other career. Physical and emotional health provide the conditions from which energy is derived. The playing fields of Bethany bring victories to the battlefields of the world.

### 5. A UNIQUE CHILD OF GOD (Faith)

No two Bethanians are alike. In this fountain head of America's largest religious movement, we hold this truth to be self evident: that all men are created unique! Each Bethanian, therefore, is a child of God responsible to perform functions and accomplish purposes which no one else can do. He is commissioned to find the will of God for his life and perform it to the best of his ability. A true Bethanian is involved in an inveterate attempt to think truth, live, love, and trust God.

Perry E. Gresham  
President  
Bethany, West Virginia

56615

LC  
378.754  
B46  
1959

Dedicated to: William Lewis Young



In 1950, William Lewis Young returned to his alma mater to teach in the History and Political Science Department. His sense of humor makes his classes a joy. His ability to make history "come alive" by relating the past to the present and future draws testimony in the form of students from other departments who enroll in Mr. Young's classes. His personal interest in and respect for students as individuals inspire high character. His good-natured understanding and straightforward fairness promote high scholarship.

It is a privilege and a pleasure for the class of 1959 to dedicate this year's Bethanian to Professor William Young.



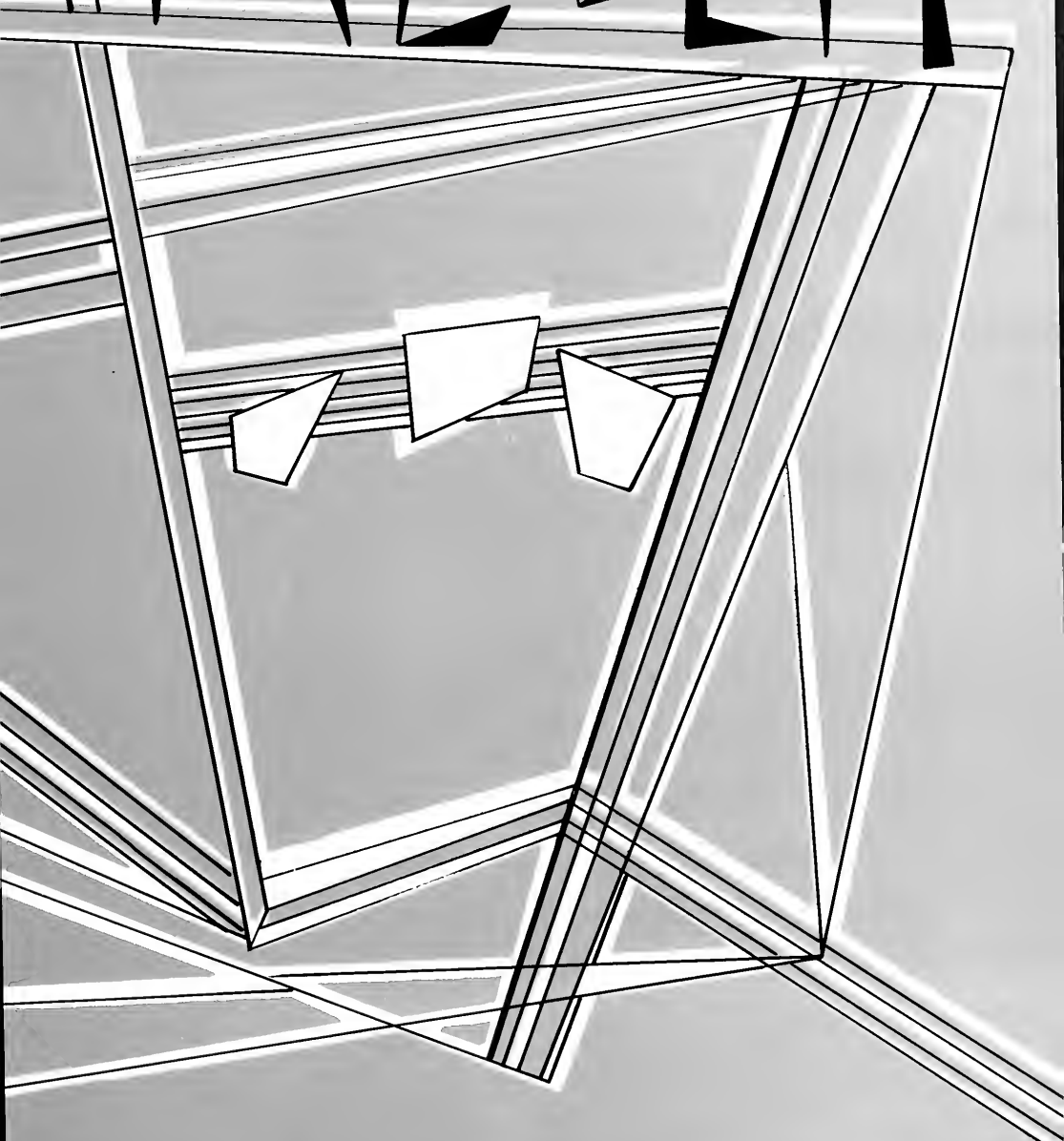


# CONTENTS

	PAGE
FACULTY	6
SENIORS	24
FRATERNITIES - SORORITIES	48
ACTIVITIES	70
SPORTS	92
FEATURES	112



# FACULTY





DR. PERRY EPLER GRESHAM

*President of Bethany College*



DR. BERNAL R. WEIMER

*Vice-President*

*Dean of  
Faculty*

WARNER G. PETERSON

*Vice-President*

*Treasurer*

*Business*

*Manager*



# *T h e D e a n s*



ROBERT A. PRESTON  
Dean of Students



WINIFRED N. WEBSTER  
Dean of Women



ROSEMARIE PYSH  
Assistant Dean of Women



DR. LESTER G. McALLISTER  
Provost of External Affairs



KENNETH W. HANEY  
Registrar



ROBERT A. SANDERCOX  
Assistant Provost



HARRY MEYERS  
Accountant



PAUL WHITE  
Manager of Bethany Book Store



HARLEY DUNHAM  
Building And Grounds



DR. LARGE  
College Physician



MILDRED WILLIAMS  
Manager of the Slater System



CATHERINE SPRINGER  
College Nurse



Mrs. Booth, Mrs. Garner, Mrs. Leonetti, Mrs. Nolte, Mrs. Tye.

Mrs. Martin, Lois Cox, Mrs. Belanus, Mrs. Lloyd, Kathleen Brown.



Patricia Martindill, Mrs. Head (seated), Mrs. Cross, Charlotte Myers, Mrs. Van Meter.

Mrs. Fields.



Gratitude rarely, if ever, finds sufficient means of expression . . . words are ineffectual. The act of rendering thanks was best expressed in ancient religions. A symbol, representing the people and the occasion, was offered, rather than given. To complete the ritual the sacrifice had to be accepted as worthy.

We offer this section of the Bethanian to the faculty with the hope that our gratefulness may be acknowledged.



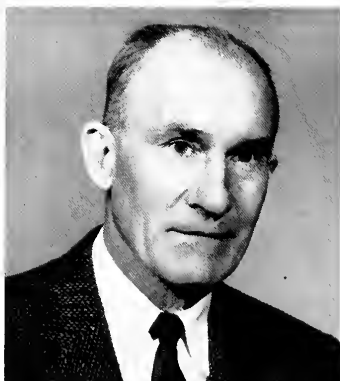
ANDREW LEITCH, A.B., A.M., B.D., Ph.D.,  
D.D.  
Professor of Psychology Emeritus



EMMETT E. ROBERTS, A.B., A.M.  
Journalism Department Head



OSBORNE BOOTH, A.B., B.D., Ph.D.  
Religion Department Head



JOHN J. KNIGHT, A.B., A.M.  
Physical Education Department Head



JOHN S. V. ALLEN, B.S., M.S., Ph.D.  
Physics Department Head



BENJAMIN C. SHAW, A.B., A.M., Ph.D.  
History Department Head



EARL D. MCKENZIE, A.B., A.M., M. Litt.,  
Ph.D.  
Modern Languages Department Head

JOHN D. DRAPER, B.S., Ph.D.  
Chemistry Department Head



WILBERT S. RAY, A.B., A.M., Ph.D.  
Psychology Department Head



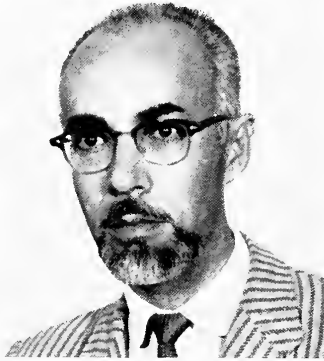
ROBERT J. NICKEL, A.B., A.M., Ed.D.  
Education Department Head



BRADFORD TYE, B.S., M.S.  
Mathematics Department Head



MARGARET R. WOODS, A.B., A.M.  
Modern Languages



GEORGE K. HAUPTFUEHRER, A.B., B.M.,  
A.M.  
Music Department Head



S. ELIZABETH REED, A.B., M.Ed.  
Physical Education



WILLIAM L. CHAMBERS, A.B.  
Economics and Business Administration



WILLIAM L. YOUNG, A.B., A.M.  
History and Political Science



LUTA M. GORDON, A.B., M.Ed.  
Education

HAROLD E. MARTIN, A.B., A.M.  
Physical Education



JOHN R. TAYLOR, A.B., M.A.  
English



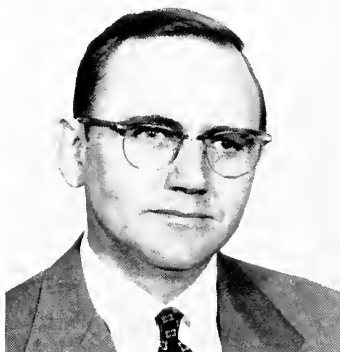
MERLE E. JACOBS, A.B., Ph.D.  
Biology



WILLIAM D. RICHEY, A.B., Ph.D.  
Chemistry



ROBERT H. YOCKEY, A.B., M.S.  
Head Librarian



JOHN D. BABINGTON, A.B., M.A.  
Speech and Dramatics



LYLE R. TRUE, A.B., A.M.  
Art



ROBERT H. SYKES, A.B., M.A.  
English



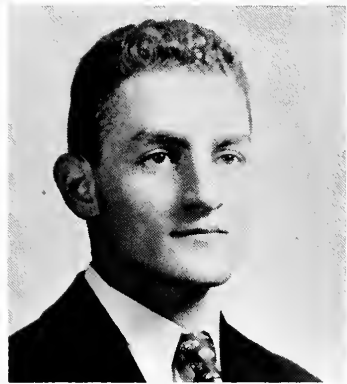


WILLIAM N. FERRIS, A.B., M.A.  
Modern Languages



JACQUES C. B. FORBES, A.B., M.A.  
Modern Languages

THOMAS P. MULLEN, A.B., M.A.  
English



ROBERT BERNAT, B.F.A.  
Music



OTTO W. WENDEL, B.S., M.S.



BARRIE RICHARDSON, A.B., A.M.  
Economics and Business Administration



EILENE PIERSON, B.A.  
Speech and Dramatics



WILLIAM M. COCHRAN, JR., A.B., A.M.  
Psychology



DALE E. SHAFFER, B.S., M.A.  
Economics and Business Administration



EDNA W. WOOLERY, A.B., B.L.S.  
Assistant Librarian



WILMA M. SHANER, A.B.  
Biology



MARY E. MCKENZIE, A.B., A.M.  
English

SUSAN W. HANNA, A.B.  
Physical Education



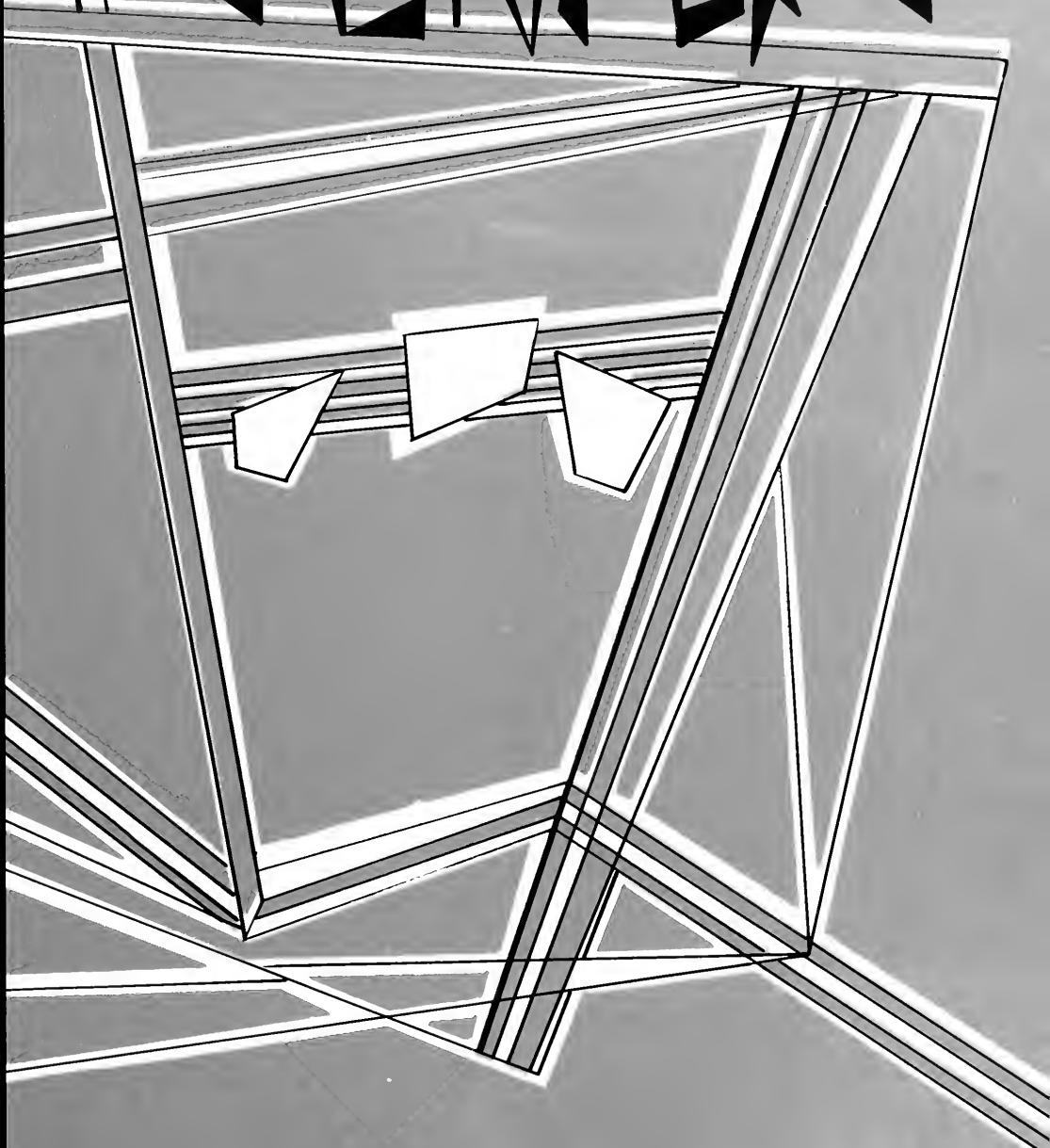
ROBERT L. LEMON, A.A., B.D.  
Minister of Bethany Memorial Church



LUCILLE D. SHAW, A.B., B.L.S.  
Assistant Librarian



# SENIORS





**BABETTE ABERLI**

"Babs"

West Orange, N. J.

*English*

Phi Mu, Ritualistic Chairman, Concert Choir; Church Choir; Messiah Choir; AWS; Language Club; Canterbury Club.

**MARGARET JEAN ARMSTRONG**

Nutley, N. J.

*English*

Phi Mu, Assistant Treasurer, Registrar; Bethanian; Tower, Circulation Manager; Messiah Choir; IRC Sock and Buskin.



**JOYCE ARNOLD**

Springfield, N. J.

*Biology*

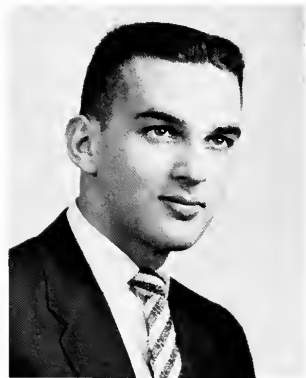
Zeta Tau Alpha, Vice-President, House Manager, Activities Chairman; SNEA; SBOG; AWS; WAA, Vice-President, Treasurer; Intramural Sports; CLEW Committee Co-Chairman; Assistant in Biology Department.

**CYRUS BARIMANI**

Bazar, Sari, Iran

*Pre Med Chemistry*

Independent Men; Chemistry Club; IRC; Language Club, Treasurer; Tower; American Chemical Society.



**MICHAEL BERG**

"Mike"

Oceanport, N. J.

*Biology*

Kappa Alpha; IFC, President; SBOG; Kalon; Sophomore Class President; Male Chorus, President; Who's Who in American Colleges and Universities; Dining Hall Chairman; Moo Moo Moo; Resident Hall Proctor; Intramural Sports; Freshman Guide.

"Ted thinks I'm a terrible cook too."





Pride of the Bisons signs autograph.



**RICHARD BLUM** "Dick"  
Jamaica, N. Y.

*Biology*

Beta Beta Beta, Historian; W. Va. Academy of Science; Bethanian; Tower; Swimming Team.

**TODD FRANKLIN BOFF**  
Union, N. J.

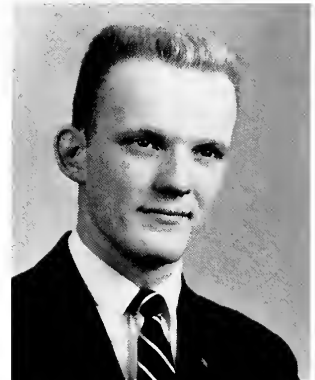
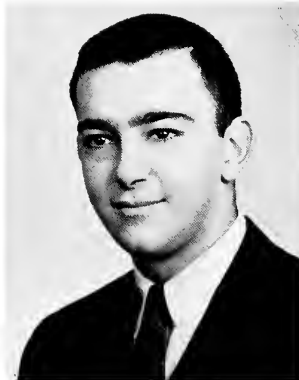
*Biology*

Independent Men; W. Va. Academy of Science; Language Club; Bethanian; Tower; Golf Team; Intramural Sports.

**GORDON O. BOOTH**  
Bethany, W. Va.

*Economics*

Beta Theta Pi; Swimming Team, Co-Captain; SCA, President; Male Chorus, Concert Choir; Church Choir, Economics Club; Assistant in Religion Department.



**ROBERT L. BRAGG**  
Bridgewood, N. J.

"Bob"

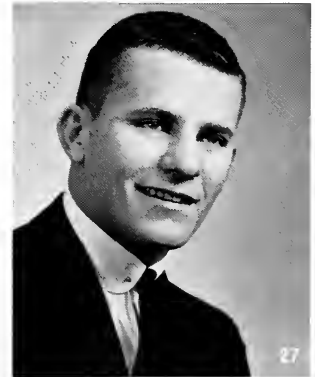
*Economics and Business Administration*

Alpha Sigma Phi, President, Secretary, Social Chairman; Economics Club; CLEW, Committee Co-Chairman; IFC; Intramural Sports.

**FRANK WRIGHT BURR**  
Teaneck, N. J.

*Economics and Business Administration*

Sigma Nu, Commander; Freshman Class Vice-President; Sophomore Class Treasurer; IFC; Moo Moo Moo; CLEW; Male Chorus; Economics Club; Track; Intramural Sports.





What the pin girls do on Saturday night.



**LUCILLE BURGER** "Lucy"  
 Long Island, N. Y.  
*Elementary Education*  
 Kappa Delta, President; Pan-Hellenic Council, President; Junior Class Treasurer; IRC; SNEA; Messiah Choir; Church Choir; Bethanian; CLEW.

**WILLIAM J. BUTTERWECK** "Bill"  
 Brookside, N. J.

*Economics*

Sigma Nu, Scholarship Chairman; Economics Club; Basketball; Track; Intramural Sports.

**WAYNE CAMPBELL**

Pittsburgh, Pa.

*Economics*

Kappa Alpha, President, Historian; IFC; Economics Club; Messiah Choir; Male Chorus; Intramural Sports.



**DELIO JAMES CARNEVAL** "Del"  
 Glassport, Pa.

*Economics and Business Administration*

Alpha Sigma Phi, House Manager, Athletic Chairman, SBOG, Representative; Junior Class Vice-President; Economics Club; Football; Baseball; Varsity "B"; Intramural Sports.

**JACK A. CASTINA** "Zoltan"  
 Flushing, N. Y.

*Psychology*

Kappa Alpha, Athletic Chairman; Male Chorus; Chess Club; Newman Club; Baseball; Intramural Sports.







**MARY ANN CAVALOVITCH**

Bethel Park, Pa.

*Elementary Education*

Kappa Delta, Treasurer, Scholarship Chairman; SBOG, Corresponding Secretary; CLEW, Corresponding Secretary; WAA, Treasurer; Career Conference, Recorder; Gamma Sigma Kappa, Secretary; Outstanding Junior Girl; Messiah Choir; Newman Club, Secretary; SNEA; Tower; Intramural Sports.

**JUDITH DRESSLER CIRIPOMPA "Judy"**

Glen Rock, N. J.

*Personnel Management*

Alpha Xi Delta; WAA, Secretary; AWS Board; Economics Club; CLEW, Committee Chairman; Bethanian; Assistant in Economics Department.



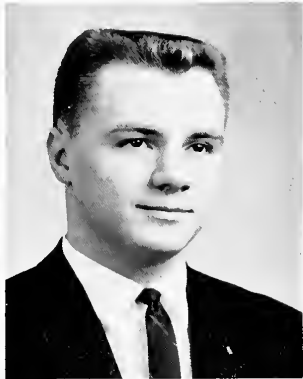
**PHILIP COCCO**

"Crow"

Orange, N. J.

*Public Relations*

Phi Kappa Tau, President, Secretary, Alumni Secretary, Rush Chairman; Bethanian, Editor, Assistant Editor; Tower, Sports Editor; CLEW, Co-Editor; Career Conference; IRC; IFC, Social Chairman; Baseball; Varsity "B"; Newman Club; Intramural Sports.

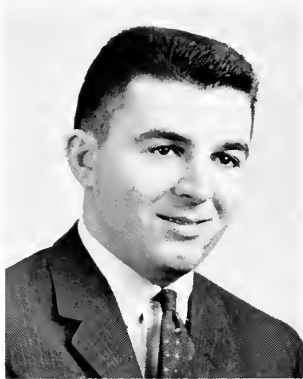


**RICHARD FRANK CIRIPOMPA "Dick"**

Wheeling, W. Va.

*Mathematics*

Phi Kappa Tau, Assistant Treasurer, Treasurer, Chaplain; SBOG; Kalon; Who's Who in American Universities and Colleges; SBOG; Economics Club, Vice-President; CLEW, Committee Co-Chairman; Bethanian; Career Conference; Football; Basketball; Varsity "B"; Intramural Sports.



**PHILIP COCCO**

Orange, N. J.

*Public Relations*

Phi Kappa Tau, President, Secretary, Alumni Secretary, Rush Chairman; Bethanian, Editor, Assistant Editor; Tower, Sports Editor; CLEW, Co-Editor; Career Conference; IRC; IFC, Social Chairman; Baseball; Varsity "B"; Newman Club; Intramural Sports.

"Crow" **RICHARD FRANK CIRIPOMPA "Dick"**

Wheeling, W. Va.

*Mathematics*

Phi Kappa Tau, Assistant Treasurer, Treasurer, Chaplain; SBOG; Kalon; Who's Who in American Universities and Colleges; SBOG; Economics Club, Vice-President; CLEW, Committee Co-Chairman; Bethanian; Career Conference; Football; Basketball; Varsity "B"; Intramural Sports.

This is why they are independent.

**PAUL ROY COSTELLO "Cost"**  
Manhasset, N. Y.

*Personnel Management*

Kappa Alpha; Tower; Canterbury Club; Intramural Sports.





**MARY LOU COWLEY**

Higbee, Mo.

*Religion*

Independent Women; Ministerial Association.



While the cat's away, Judy watches TV.

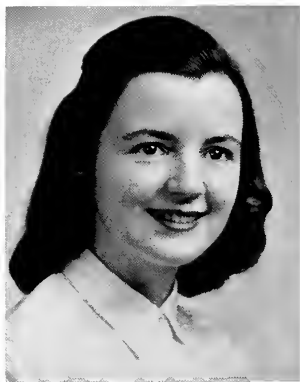


**WILLIAM R. CROUTHAMEL** "Bill"

Pittsburgh, Pa.

*Economics and Business Administration*

Phi Kappa Tau, Chaplain; Concert Choir Assistant Business Manager; Male Chorus Business Manager; Economics Club; Intramural Sports.



**CAROL KIMBALL CULLIS** "Kim"

Nutley, N. J.

*Biology*

Alpha Xi Delta, Corresponding Secretary, Scholarship Chairman; CLEW; WUS; Bethanian; Concert Choir; Messiah Choir; Church Choir; Homecoming Court; Queen of Hearts Court.



**ALLEN T. CULLIS, JR.** "Ted"

Chester, Pa.

*Economics*

Sigma Nu, Treasurer; Economics Club, President, Vice-President; Vet's Club, President; Kappa; Tower Staff; Career Conference Chairman; Outstanding Junior Man Award; Who's Who in American Colleges and Universities; Assistant in Economics Department.



**ERROL JACK DIETRICH**

East Aurora, N.Y.

*Religion*

Ministerial Association, Student Congregation; Concert Choir; Messiah Choir; Church Choir.

**ARTHUR CHARLES DILG**

"Art"

New York, N. Y.

*History and Political Science*

Beta Theta Pi, Alumni Secretary; Ministerial Association, President; CLEW, Committee Co-Chairman; Student Christian Association, Vice-President; IRC; Male Chorus; Messiah Choir; Church Choir.



**GERALD FRANCIS DUFFEE**

"Duff"

Ridgway, Pa.

*Economics and Business Administration*

Beta Theta Pi; Economics Club; Veterans Club; Bertha House Headwaiter; Newman Club; Vice-President; Football; Track; Varsity "B", President, Vice-President; Intramural Sports.

**KARL KENNEDY DUNLAP**

"Ken"

Akron, Ohio

*History and Political Science*

Beta Theta Pi, President, Corresponding Secretary, Song Leader; IFC, Treasurer; CLEW, Co-Chairman; Ministerial Association; SCA; IRC; Male Chorus; Basketball.



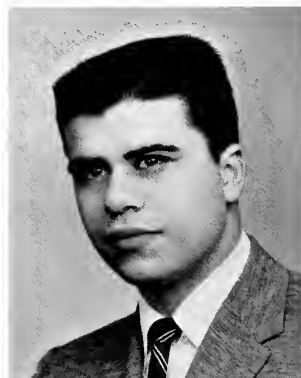
**DENNIS WADE EVANS**

"Denny"

Chesterland, Ohio

*Economics and Business Administration*

Beta Theta Pi, Song Leader; Economics Club; Moo Moo Moo; Male Chorus; Swimming Team; Golf Team; Varsity "B"; Intramural Sports.



Phi's start early for Greek sing.



**ANTHONY FARRANTO** "Tony"  
Bloomfield, N. J.

*Economics and Business Administration*  
Alpha Sigma Phi; Economics Club; Intramural Sports.

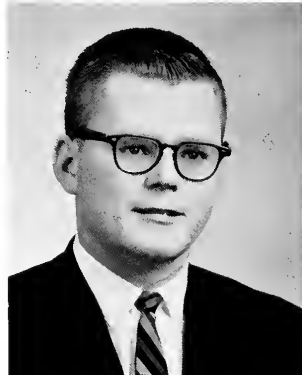
**FRANCES FIESS**

New Martinsville, W. Va.

*Elementary Education*

Kappa Delta, Editor, Song Leader; AWS, President; CLEW, Co-Secretary; Career Conference, Secretary; WAA; Tower; Messiah Choir; Concert Choir; Church Choir; Intramural Sports.

“Fran”



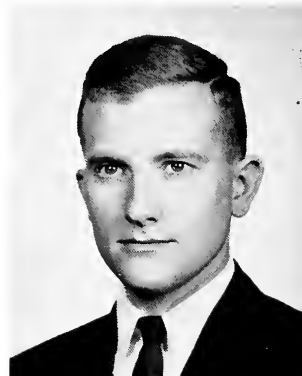
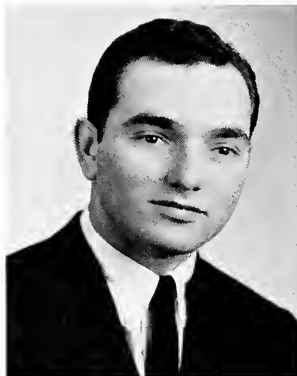
**JAMES KARL FINN, JR.**

Pittsburgh, Pa.

*Physics*

Phi Kappa Tau, Social Chairman; Social Committee, Chairman; Bethanian; Tower; W. Va. Academy of Science; SBOG; Church Choir; Male Chorus; Concert Choir, Business Manager; Football Team Manager; Swimming Team Manager; Intramural Sports; Assistant in Physics Department; Assistant in Mathematics Department.

“Mickey”



**MICHAEL H. FRIEDMAN**

Elizabeth, N. J.

*Pre-Med Biology*

Independent Men; Beta Beta Beta, Vice-President; W. Va. Academy of Science; SBOG, Sergeant-of-Arms; Bethanian; Tower; Golf Team.

“Fried”

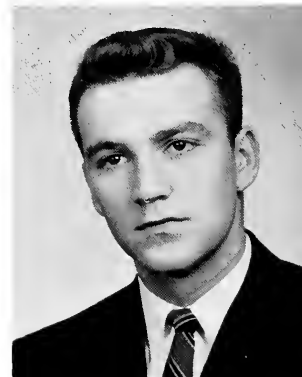
**LOUIS ARNOLD FUCHS**

Forest Hills, N. Y.

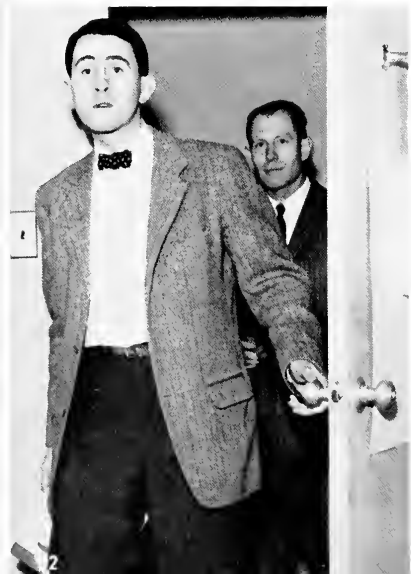
*Biology*

Beta Theta Pi, SBOG Representative; Freshman Class President; IRC; SBOG; Intramural Sports.

“Sonny”



“Sorry, girls, I thought this was Campbell.”



**GEORGE A. GAY**

Dunellen, N. J.

*English*

Sigma Nu; IFC, Vice-President; Intramural Sports.



**ROBERT GOIN** "Gork"  
Verona, Pa.

*Sociology*  
Phi Kappa Tau, Pledgemaster, Rush Chairman, House Manager; Football; Basketball, Captain; Intramural Sports; Assistant in Physical Education Department.



"Quite a book, wasn't it?"



**RICHARD GOLD** "Dick"

Merrick, N. Y.  
*History and Political Science*  
Kappa Alpha, Social Chairman; IRC; Chess Club, Secretary, President; Football; Track; Intramural Sports.



**IRA JACK GOLDWASSER**

Long Island, N. Y.  
*Biology*  
Beta Beta Beta; W. Va. Academy of Science; Tennis Team; Varsity "B," Secretary; Moo Moo; Intramural Sports; Assistant in Biology Department.



**ROBERT GOTTLIEB** "Bob"

Long Island, N. Y.  
*Biology*  
Independent Men; Language Club, President; IRC; W. Va. Academy of Science; Social Committee; Male Chorus; Student Handbook Editor.



**DAVID S. GREENBERG** "Dave"

Teaneck, N. J.  
*History and Political Science*  
Sigma Nu, Reporter, Marshal, Rush Chairman, Scholarship Chairman; SBOG, President, Representative; Kalon; Who's Who in American Colleges and Universities; IRC; Football; Intramural Sports.



"Togetherness," isn't it great.



SALLY JEAN HAGEMEYER  
"Jean"

Scarsdale, N. Y.

*Physical Education*

Kappa Delta, House Manager, Athletic Chairman; AWS Board; WAA; SNEA; Messiah Choir; Intramural Sports.

BARBARA MAE HANNA

"Barb"

Waynesboro, Pa.

*Physical Education*

Alpha Xi Delta, President; Rush Chairman; Pan-Hellenic Council, Secretary; IRC, Secretary; Kalon; Who's Who in American Colleges and Universities; Senior Class Secretary; Bethanian; Tower; WAA, President, Social Chairman; Beta Beta Beta; Homecoming Court; Intramural Sports.

SHIRLEY UPPERMAN HARBISON

Fresno, Calif.

*Religious Education*

Phi Mu, Education Chairman; Ministerial Association; Language Club; CLEW, Recording Secretary.



STANLEY LINCOLN HARBISON

Detroit, Michigan

*History and Political Science*

Beta Theta Pi; Ministerial Association, President; WUS, Co-Chairman; Tower, Sports Editor; Handbook, Editor; SBOG; IRC; Alpha Psi Omega, Treasurer; SCA; Language Club; Bethanian; Messiah Choir; Intramural Sports; CLEW, Co-Editor; Assistant in History Department.

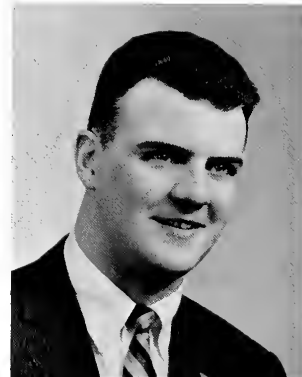
ROBERT GORDON HEAD

"Bobbo"

Baltimore, Md.

*Economics*

Moo Moo Moo, Big Bull; Senior Class Vice-President; Kalon, President; Who's Who in American Colleges and Universities; Phillips Hall Head-waiter; Student Marshal; Career Conference; Assistant in Economics Department.





**MARIE AGNES HEADY** "Ree"  
Fairfield, Conn.

*Physical Education*

Zeta Tau Alpha, Treasurer, Membership Chairman; Pan-Hellenic Council; Beta Beta Beta; IRC; WAA, Vice-President; Newman Club; SBOG; Bethanian; Intramural Sports.



**PATRICIA FAY HENKEL** "Patsy"  
Nashville, Tenn.

*Religious Education*

Phi Mu, Social Chairman, Membership Chairman; Ministerial Association; Student Church Board, Secretary; SCA, Secretary; IRC; SNEA; Pan-Hellenic Council; CLEW; WAA; Social Committee.



**MICHAEL S. HERWITT** "Mike"  
Teaneck, N. J.

*Economics and Business Administration*

Alpha Sigma Phi; SBOG Representative; Bethanian. Features Editor; Economics Club; Intramural Sports.



**DAWN CARDER HILL**  
Parkersburg, W. Va.

*Elementary Education*

Alpha Xi Delta, Vice-President, Corresponding Secretary; WUS, Treasurer; CLEW, Co-Chairman; SNEA, Vice-President; Kalon, Vice-President; Who's Who in American Colleges and Universities; WAA; Concert Choir; Church Choir; Messiah Choir; Madrigal Singers; Homecoming Queen.



**RICHARD BLAKELY HILL** "Dick"

Wellsville, N. Y.

*History and Political Science*

Beta Theta Pi, Activities Chairman, Social Chairman; Kalon; Who's Who in American Colleges and Universities; Social Committee; Ministerial Association, Treasurer; IRC; CLEW; SBOG; Bethanian; Basketball; Varsity "B"; Assistant in History Department.

"Time for your one o'clock, Dad."



**PAUL LAWRENCE HOFFMAN** "Hoff"  
Belle Vernon, Pa.

*Mathematics*

Phi Kappa Tau; Newman Club, Secretary; Football, Co-Captain; Baseball; Varsity "B"; Intramural Sports.

**JANET LILLY HOLLANDSWORTH**

Beckley, W. Va.

*Elementary Education*

Alpha Xi Delta, Treasurer, Corresponding Secretary; WUS; Beta Beta Beta; Alpha Psi Omega; Gamma Sigma Kappa; Kalon; Who's Who in American Colleges and Universities; Bethanian; Tower; SNEA, Secretary; IRC; Language Club; CLEW.



**DAWN HOLT**

Beaver, Pa.

*English*

Alpha Xi Delta, Historian, Recording Secretary, Journal Correspondent; Kalon; Who's Who in American Colleges and Universities; CLEW, Corresponding Secretary; WUS, Publicity Chairman; Bethanian, Business Manager; Tower; Literary Harbinger Business Manager; Assistant in English Department.

**MARION HOUSCHILD**

Tenally, N. J.

*Elementary Education*

Zeta Tau Alpha, Pledge Trainer, Secretary; SBOG; WAA.



"Little Gork" goes for two.



**FRANK E. HUFFMAN**

Akron, Ohio.

*Physics*

Independent Men; Band.







**KATHARINE LOUISE JOHNS**  
"Kitty"

Uniontown, Pa.

*Elementary Education*

Kappa Delta, Secretary, House Manager;  
SNEA; WAA, Social Chairman; Mes-  
siah Choir.



The long trip from Breezy's.



**CARYL ELIZABETH KELLEY** "Kelley"  
Kent, Ohio.

*Sociology*

Phi Mu, Vice-President, Secretary, Song Leader,  
Chaplain; Alpha Psi Omega, President, Treasurer;  
Sock and Buskin, Vice-President; SBOG; Sociol-  
ogy Club; WAA; SBOG; Concert Choir; Messiah  
Choir; Church Choir; Gamma Sigma Kappa.



**DANIEL E. KREGER** "Nap"

Belleville, N. J.

*Sociology*

Kappa Alpha; Band, Drum Major; Intramural  
Sports.



**MARY CATHERINE LINVILLE**

Claysville, Pa.

*Elementary Education*

Kappa Delta; AWS; SNEA; Intramural Sports.



**JOSEPH M. LLOYD** "Joe"

Madison, N. J.

*Economics and Business Administration*

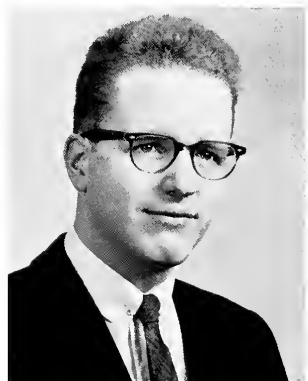
Kappa Alpha; Social Committee; Tower; Triple  
Quartet; Madrigal Singers; Concert Choir; Mes-  
siah Choir; Male Chorus; Church Choir; Intra-  
mural Sports.



**THOMAS LOGSTON**  
McMechen, W. Va.  
*Religion*  
Ministerial Association.



Stan dictates to his secretary.



**THOMAS ALBERT MARSHALL** "Tom"  
Dallas, Texas  
*Chemistry*  
Kappa Alpha; American Chemical Society; Chemistry Club, Vice-President; Tower; Band; Messiah Choir; Assistant in Chemistry Department.



**DONALD F. McCREADY** "Ded"  
Silver Springs, Md.  
*Economics*  
Canterbury Club, President; Economics Club; Career Conference; Senior Class Treasurer; Kilon; Veterans Club; Football; Baseball; Varsity "B," Treasurer; Intramural Sports.



**SANDRA McCONNELL** "Sandy"  
Weirton, W. Va.  
*Economics*  
Alpha Xi Delta, President, Membership Chairman; AWS, Secretary, Treasurer; Freshman and Sophomore Class Secretary; Kilon; Who's Who in American Colleges and Universities; Homecoming Court; Economics Club; IRC.



**JOHN R. METZNER** "Metz"  
Ambler, Pa.  
*Mathematics*  
Tower; Chess Club; Track; Varsity "B"; Intramural Sports.

**JANE MITCHELL MORRIS** "Mitch"

Cranston, R. I.

*Elementary Education*

Kappa Delta, Vice-President; AWS; SNEA, Recording Secretary; CLEW; WAA; Intramural Sports.

**ROLAND MICHAEL NESI** "Baby Ro"

Brooklyn, N. Y.

*Biology*

Independent Men, Vice-President, Treasurer; Language Club, President, Vice-President; Newman Club; Discussion Group; Freshman Guide.



**T. ROBERT O'KONSKI**

Wheeling, W. Va.

*Economics and Business Administration*

Transferred from Duke University in Junior Year.

**CHARLES F. OTEY** "Chuck"

Weirton, W. Va.

*Public Relations*

Phi Kappa Tau, Parliamentarian, Scholarship Chairman, Song Leader; Student Handbook Editor; Tower, Sports Editor; Newman Club; Kalon; Male Chorus; Baseball; Tennis; Varsity "B"; College Sports Publicity Director; CLEW, Co-Editor.



George takes his bottle like a good baby.

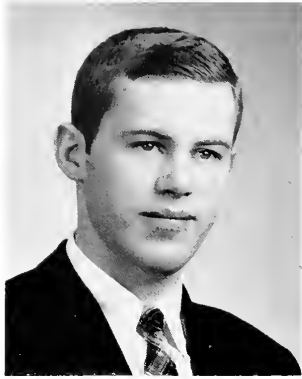


**RUTH E. PAQUET**

Youngstown, Ohio

*Economics*

Kappa Delta; Economics Club; Chemistry Club; SCA; Tower; AWS Board.



THOMAS MOFFAT PARKER "Thumper"  
Wheeling, W. Va.

*Public Relations*

Tower, Business Manager; Economics Club; Canterbury Club; Swimming Team; Golf Team; Intramural Sports.



CHARLES W. PARKINS "Chuck"  
Canonsburg, Pa.

*Biology*

Kappa Alpha; Gamma Sigma Kappa; Social Committee; Band; Concert Choir; Male Chorus; Church Choir; Swimming Team.



CHARLES LYMAN PERRY "Pete"  
Swarthmore, Pa.

*History and Political Science*

Sigma Nu, Recorder, Athletic Chairman; Bethanian, Assistant Business Manager, Business Manager; Tower; CLEW, Co-Chairman; IFC; IRC; SBOG; Track; Intramural Sports; Assistant in History and Political Science Department.



CHRIS PETROPOULOS

Kalamata, Greece

*History and Political Science*

Independent Men; Gamma Sigma Kappa; IRC, Vice-President; Language Club, Vice-President.



RAYMOND A. PHILLIPS "Bud"  
Marblehead, Mass.

*Economics and Business Administration*

Phi Kappa Tau, Vice-President, Social Chairman; SBOG, Vice-President, Treasurer; Social Committee, Treasurer; WUS; Economics Club, Publicity Chairman; CLEW, Finance Chairman; Canterbury Club, President; Career Conference; Male Chorus Business Manager; Football; Varsity "B"; Intramural Sports.

The well adjusted married couple.



ANTHONY LEE REISNER "Tony"

New York, N. Y.

*Pre-Dent Biology*

Independent Men, Vice-President; Beta Beta Beta; SBOG; IRC; Language Club; Chess Club; Tower; Male Chorus; Swimming Team.

DORIS YVONNE ROSSELET

Springfield, N. J.

*Modern Languages*

Phi Mu, Treasurer, Assistant Treasurer; Language Club, Secretary, Treasurer; IRC; SCA; AWS; CLEW; Sock and Buskin; Assistant in Modern Languages Department.



KATHLEEN H. RUNK

"Doot"

Harrisburg, Pa.

*Sociology*

Alpha Xi Delta, House Manager; Sociology Club; CLEW; SNEA; Homecoming Court; Bethanian; Messiah Choir; Church Choir.

LORENZO GEORGE RUNK

"Rennie"

Philipsburg, Pa.

*Biology*

Beta Theta Pi, Sergeant-at-Arms, Treasurer; Gamma Sigma Kappa, President; Beta Beta Beta; Chemistry Club, Treasurer; Concert Choir; Male Chorus, Secretary; Swimming Team; Band.



"What do I do now, Ma?" asks Al.



JAMES RICHARD SAUER

"Jimbo"

Akron, Ohio

*Modern Languages*

Beta Theta Pi; Kalon; Junior Class Secretary; Senior Class President; Basketball; Swimming Team.





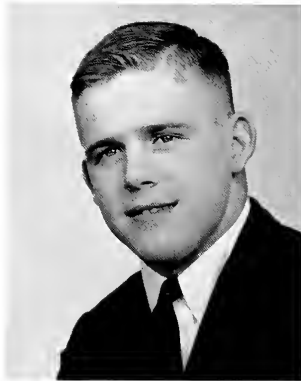
**JOHN PETER SCHAFER**  
Elberon, N. J.  
*Physics*



It is more enjoyable than walking.



**VICTORIA SCHANCK** "Vicki"  
Bethany, W. Va.  
*Modern Languages*  
Kappa Delta; IRC, Treasurer; Language Club;  
Messiah Choir; Gamma Sigma Kappa; Assistant  
in Modern Languages Department.



**JOHN ALLEN SCHRIVER** "Fog"  
Egbertsville, N. Y.  
*Chemistry*  
Beta Theta Pi, Recording Secretary; Chemistry  
Club; Tower; Intramural Sports.



**LEONARD GEORGE SEMINARA**  
Brooklyn, N. Y.  
*English*  
Independent Men, Secretary, Treasurer, Presi-  
dent; Language Club; Debating Society, Vice-  
President; Tower, Features Editor; Discussion  
Group; IRC; Who's Who in American Colleges  
and Universities; Newman Club; Intramural Sports.



**RICHARD ALLEN SHILLINGER** "Jaggers"  
Pittsburgh, Pa.  
*Economics and Business Administration*  
Phi Kappa Tau, Journal Correspondent; Bethan-  
ian; Economics Club; Intramural Sports.



And then the students "chowed down."



**ARTHUR L. SPRINGER** "Art"  
West Hempstead, N. Y.  
*Biology*  
Beta Beta Beta; Bethanian; Tower;  
Tennis Team.

**BARBARA STANHAGEN** "Stan"  
Wellsburg, W. Va.  
*Physical Education*  
Phi Mu, Pledge Trainer; WAA Board; SNEA;  
Assistant in Physical Education Department.

**MARK KENNETH TAYLOR**  
Teaneck, N. J.  
*Biology*  
Beta Beta Beta; Tower, Art Editor; Chess Club.



**JERROLD L. TERDIMAN** "Jerry"  
Yonkers, N. Y.  
*Biology*  
Kappa Alpha; Gamma Sigma Kappa; Beta Beta  
Beta; Chemistry Club; Tower; IRC; Male Chorus;  
Messiah Choir; Intramural Sports; Assistant in  
Psychology Department.

**GEORGE TODD** "Teddy"  
Pittsburgh, Pa.  
*Psychology*  
Kappa Alpha, Vice-President, Treasurer, Social  
Chairman; CLEW, Committee Co-Chairman;  
Chess Club, President; Concert Choir; Male  
Chorus; Church Choir; Band; Track.



**JEFFREY KOCH THOMPSON** "Jeff"

St. Clairsville, Ohio

*Chemistry*

Beta Theta Pi, Treasurer, Vice-President, Pledge Master; Gamma Sigma Kappa; Alpha Psi Omega; Chemistry Club, President; Sock and Buskin, President.

**WILLIAM TUTHILL** "Tut"

Greenport, N. Y.

*Physics*

W. Va. Academy of Science; Track Team; Varsity "B."



**MICHAEL JOHN TUTTLE**

Hawthorne, N. Y.

*English*

Chess Team.

**JOAN LEE UPDEGRAFF** "Alvin"

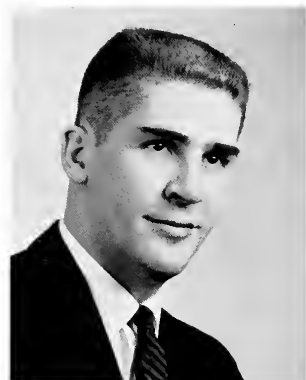
Buffalo, N. Y.

*English*

Alpha Xi Delta; Marshal Journal Correspondent; IRC; CLEW, Committee Co-Chairman; Bethanian; Tower.



"I was a social success for Alpha Sigma Phi."



**ANDREW NICHOLAS URBANIC**

"Abbie"

Bridgeville, Pa.

*Sociology*

Phi Kappa Tau, House Manager, Athletic Chairman; Newman Club; Football, Co-Captain; Baseball, Captain; Basketball; Varsity "B," President; Intramural Sports.







**EDWARD THOMAS WETZEL** "Tom"

*Economics and Business Administration*

Beta Theta Pi, Social Chairman; Economics Club; CLEW Career Conference; West Virginia Academy of Science, Treasurer; Football Manager; Student-Faculty Discipline Committee; Intramural Sports.

**RALPH WHITE**

Daisytown, Pa.

*English*

Ministerial Association; SCA.



**ALICE FAYE WILSON**

Johnstown, Pa.

*Elementary Education*

Phi Mu; SNEA; Messiah Choir.

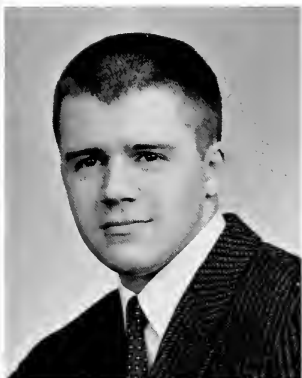
**W. KIRK WOOLERY**

"Woo"

Bethany, W. Va.

*History and Political Science*

Beta Theta Pi, Alumni Secretary; Gamma Sigma Kappa; IRC; SBOG; Swimming Team, Co-Captain; Varsity "B"; Assistant in History and Political Science Department.



**EDWARD JAMES WRIGHT**

"Ed"

Pittsburgh, Pa.

*Public Relations*

Sigma Nu; Golf Team; Intramural Sports.

"Get me a towel, Joyce?"





ROBERT E. WUESTER, JR.  
"Bear"

Ringwood, N. J.

*Economics and Business Administration*  
Alpha Sigma Phi, Secretary, Housemanager, Song Leader, Custodian; Bethanian, Senior Editor; Economics Club; Sock and Buskin; Social Committee; Concert Choir; Male Chorus; Triple Quartet; Church Choir; Messiah Choir; CLEW; Intramural Sports; Assistant in Speech Department.



FRANK YARUSSI  
Carnegie, Pa.

*Pre-Med Biology*

Phi Kappa Tau, Secretary; Beta Beta Beta, President; Kalon; Who's Who in American Colleges and Universities; Tower, Sports Editor; Football; Baseball; Track; Varsity "B"; Intramural Sports.



BEVERLY YOUNG "Bevie"  
Garden City, N. Y.

*History*

Alpha Xi Delta, Scholarship Chairman, Song Leader; IRC; Economics Club, Secretary; SNEA; Bethanian; CLEW; Concert Choir; Church Choir; Messiah Choir.

#### SENIORS NOT PICTURED

RONALD W. ADDIS "Ron"  
Connellsville, Pa.

*Elementary Education*

Kappa Alpha; IRC; Moo Moo Moo; Track; Intramural Sports.

MALCOLM DAVID DAVIS "Mal"  
Norwich, Conn.

*Economics and Business Administration*

ALBERT JOHN PAGLIUCA, JR. "Al"  
Brooklyn, N. Y.

*Economics and Business Administration*

Sigma Nu, Social Chairman; Economics Club; Social Committee; CLEW; Bethanian; Newman Club; Track; Intramural Sports.

KENNETH W. REHM  
Atlanta, Ga.

*Public Relations*

Alpha Sigma Phi; Moo Moo Moo; Male Chorus; Track; Varsity "B."

GARTH LILAND BURGHARD "Berky"  
Somerset, Pa.

*Biology*

Alpha Sigma Phi, Secretary; Swimming Team; SBOG; Beta Beta Beta; Ministerial Association; Varsity "B"; Intramural Sports.

MANUEL NICHOLAS  
Wellsburg, W. Va.

*Economics*

Alpha Sigma Phi, Scholarship Chairman; Economics Club; Intramural Sports.

MICHAEL STEPHEN POLLACK  
Brooklyn 30, N. Y.

*Personnel Management*

Sigma Nu, Alumni Contact Officer, SBOG Representative; Varsity Baseball; Intramural Football; Intramural Basketball; Tower Staff.

PETER STEPHENS "Pete"  
Weirton, W. Va.

*Pre-Med*

Beta Theta Pi; Beta Beta Beta; Male Chorus.

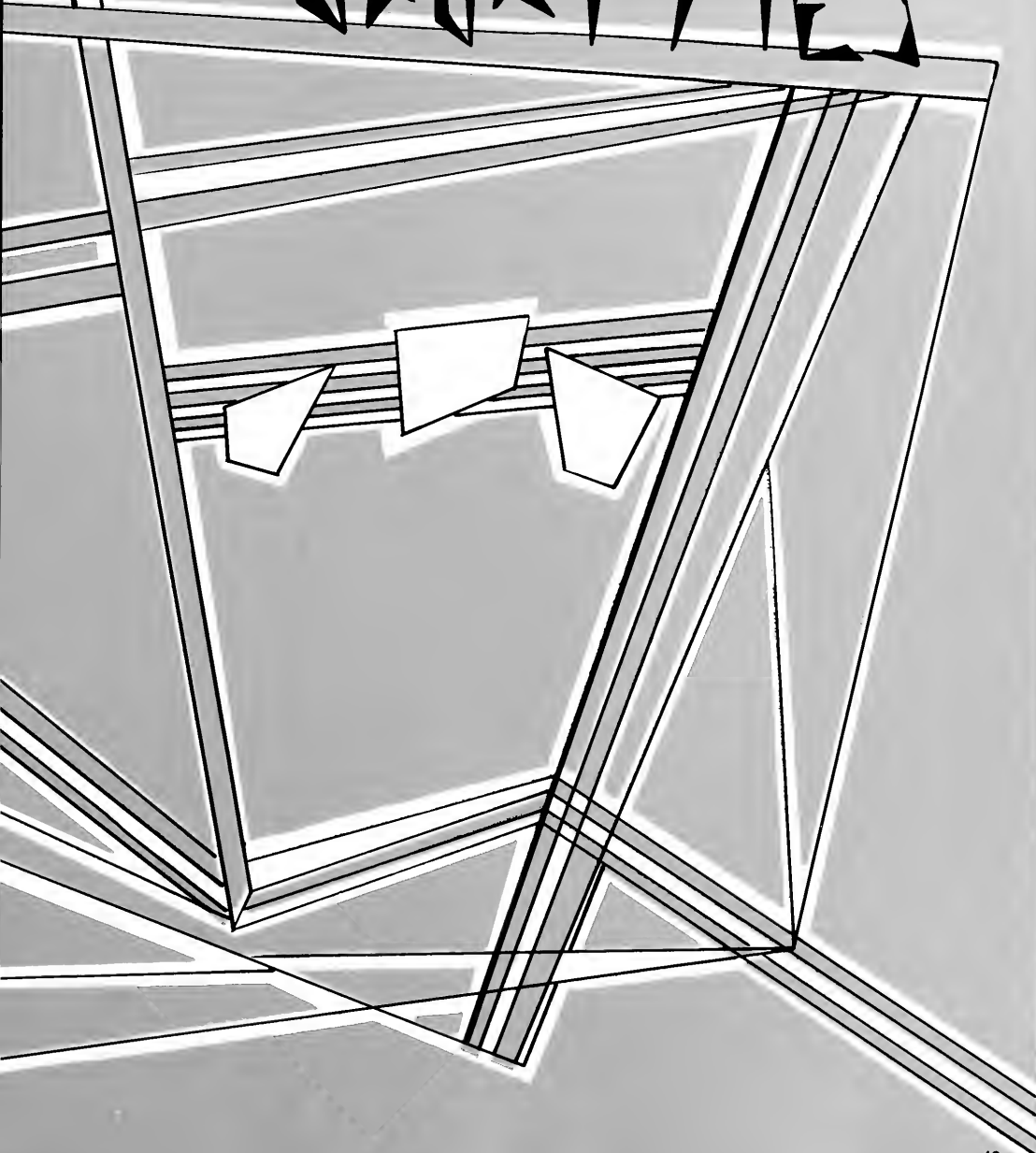


IN MEMORY OF

Although not graduated in body, William Jaynes was graduated in spirit and in the hearts of his classmates on June 7, 1958. An unquenchable courage carried Bill through nineteen years of life before a congenital heart condition finally overcame him in his dormitory room. With a friendly smile Bill was liked and admired by all . . . the memory of William Jaynes will be with the members of the "Class of 59."



# FRATERNITIES SORORITIES





Front row, standing: B. Hanna, J. Hollandsworth, K. Runk, D. Hill, B. Young, J. Updegraff, B. Clark, S. Kelly, C. Jenkins, M. McConnell, P. Onasch, M. Wagner, S. Eliassen, N. Remke, L. Craig, F. Sulzer, D. Graff, J. Peterson, B. Henk, M. Lamont, D. Prandine, E. Samuel, C. Stermer, B. Parsons, J. Shaffer, S. Foley, K. Linton, E. Zeh, S. Kuhn, B. Hurley, B. Wolff.

## Alpha Xi Delta



Homecoming began the year for Delta chapter when Dawn Hill was elected queen. The fourteen new pledges got off to a good start when they assisted the Moos at a pep rally. Among the many activities were the annual shoeshine and pizza party, the dinner-dance, a "blues" serenade, and a Spring Casual Open House. Members were represented on the Homecoming Court, the Queen of Hearts Court, and in Kalon, Who's Who, Beta Beta Beta, Gamma Sigma Kappa, and Alpha Psi Omega. The president was Barbara Hanna.



OFFICERS—B. Hanna, D. Hill, J. Hollandsworth, C. Jenkins.



Another guy loses out to Alpha Xi beauty.



Some people will do anything for money.

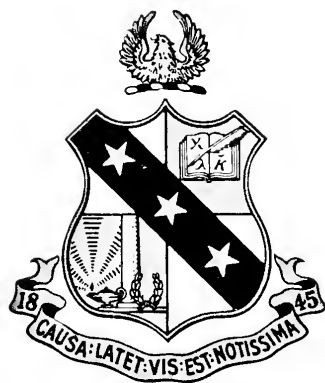


All that pizza and no beer.

Alpha  
Sigma  
Phi



First row: L. Kuhn, P. Larsen, R. Howard, P. Bauman, J. Everson, J. McIntyre. Second row: H. Letts, R. Hastings, W. Jonnson, R. Bragg, R. Wuester, D. Carneval, R. Smith. Third row: J. Blair, A. Farranto, M. Wood, A. Leytham, B. Kershner, R. Ingram, B. McLaughlin. Fourth row: J. Graham, B. Osborne, M. Herwitt, A. Skolnick, E. Evanczyk.



Beta Gamma of Alpha Sigma Phi completed a very successful year at Point Breeze Manor under the competent leadership of Robert Bragg. The pledge dance, with the traditional ranch theme, was a memorable event. Added to the social calendar were the Winter Breeze Formal, Spring Formal, Open House and informal sorority parties. Scholastically Alpha Sigma Phi has risen five places among all college organizations.

Walt Jonnson was elected president for the coming year.





OFFICERS—R. Bragg, W. Jonnson, R. Wuester, D. Hastings.



Peter Gunn and fans in action.



Leytham tries again!



*First row:* R. Baldinger, W. Kelly, D. Capen, C. Daugherty, W. Siegel, F. Stottlemeyer, F. Bruhn, D. Fielding, W. Nern, J. Lash, W. Hamill, R. Rodeler, C. Butz. *Second row:* M. Barrett, G. Duffee, W. Woolery, R. Runk, J. Thompson, D. Evans, J. Schriver, L. Fuchs, R. Hill, K. Dunlap, T. Beynon. *Third row:* S. Merselis, H. Young, J. Marshall, R. Hübler, D. Dunham, K. Nations, D. Butz, D. Updegraff, W. White, J. Blechinger, J. Niederhuber, C. Friberg, C. Brown, T. Nichols, B. Ringler. *Fourth row:* L. Trosch, C. Trosch, J. Graf, S. Lisker, C. Wratter, J. Haniford, C. Heil, H. Leach, C. Devine, J. Aupperle, H. EnDean, R. Saire, D. Rowland, J. Radke, T. Lucas.

## Beta Theta Pi



Psi of Beta Theta Pi continues to lead in its efforts to achieve a well-balanced, high intellectual and social plane among its members.

This year Betas are officers in many campus organizations. Jim Sauer is president of the Senior class; John Cerstiyik, Junior class president, and Lou Trosch, Sophomore class president. Psi Betas are also presidents of the Ministerial Association, Gamma Sigma Kappa, Chemistry Club, and Sock and Buskin.

Both the Dawn Dance and Spring Formal were successful and enjoyed by all. Our Mother's Day was made perfect with the winning of the Greek Sing trophy for the second year.

At the present time Psi is planning to build an addition to the house. It will be finished and ready for use this year.



Good to the last drop.



Calypso with B. B.

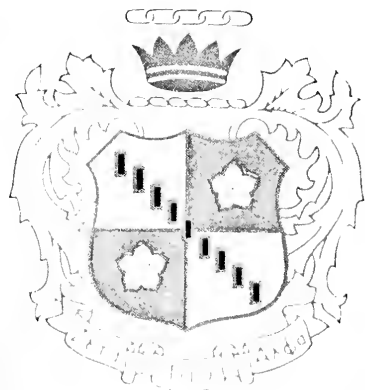


OFFICERS—K. Dunlap, J. Thompson, J. Blechinger, R. Runk.



*First row:* J. Vasoll, L. Malone, A. Maloney, C. Balzerson, B. Frazel, L. Deer, A. Eakin, J. Sprague, G. Joyce, M. Tacey. *Second row:* J. Hourigan, B. Cartmell, B. Stein, B. Scott, C. Moore, S. Scott, Mrs. Kah, E. Willey, B. Frick, S. Prentice, J. Arnold, S. Wood, J. Bradshaw. *Third row:* C. Cory, S. Ober, L. Schaefer, M. Heady, S. Jones, D. Waldeland, L. Beyson, H. Lukeas, S. Blair, B. Hannaway, S. Richardson, J. Dunbar, P. Prewitt, G. Schiefen, N. Ross, M. Houschild, D. Karn.

## Zeta Tau Alpha



In the big white house on Main Street, Ann Eakin led the Zetas to another fine year. Formal Rush Week brought fourteen pledges and four more were added after that date. Linda Bryson served as pledge president. Lorilee Deer was presented with an award for the highest pledge average. Marie Heady and Clare Cory were elected to Gamma Sigma Kappa on Honors Day.

Outstanding social events included the pledge dinner, the pledge dance, and the annual Spring Formal "April in Paris."

The house is now well marked by the addition of a large, illuminated metal sign in the shape of the badge with the letters ZTA also in lights. The sign was the gift of an enthusiastic pledge class.



OFFICERS—M. Heady, A. Eakin, J. Arnold, M. Housechild.



Hard-nose Cartmell leads another "Step Sing."



Need more than that to get it clean?



Another rumor blooms.



*First row*—R. Smith, C. Kusky, D. Bennett, D. Cadwallader, H. Heidler, C. Boyer, G. Fields. *Second row*—J. Eward, H. Kupchik, D. Bennett, D. Netting, P. Chikos, H. Kirsch, V. Cook. *Third row, seated*—B. Woodside, D. Brown, R. VanFossen, J. Allison, A. Mullins, A. Prince. *Fourth row*—D. Gorden, D. Rhodes, S. Sheller, D. Flowers, J. Merriweather, J. Lloyd, C. Parkins, T. Marshall, J. Terdiman, E. Ihle, D. Llewellyn. *Fifth row*—I. Manion, D. Morrison, P. Morgan, C. Henson, B. Brown, M. Berg, R. Addis, D. Kregler, J. Castina, W. Campbell, W. Aring, C. Kiss, R. Kindelberger.

## Kappa Alpha



The Kappa Alpha Mansion has been the scene of many activities this past year. Along with the traditional Lee's banquet, Pajama Dance, and Dixie Ball, there was the first annual Halloween Howl and a hay ride. Formal pledging brought a pledge class of 26 men.

Honors have been brought to the chapter through Ed Ihle as S.B.O.G. president and most outstanding Junior man, Carl Henson as president of Gamma Sigma Kappa, and Rolland Pfile as incoming president of Alpha Psi Omega. Several members were taken into Kalon and Gamma Sigma Kappa. For the second year the award for the Homecoming float was received.

The chapter's future plans are being made by president Roger Kindelberger.



OFFICERS—W. Campbell, E. Ihle, C. Henson, J. Merriweather.



On target . . . fire one!



The boys are on the move again.

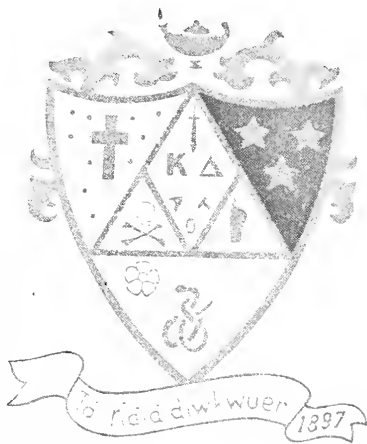


Where do you go from here?



First row—C. Zaveryl, S. Nott, S. Steigerwaldt, J. McLain. Second row—S. Gough, S. Guttormsen, B. Heitzenroder, J. Bauer, L. Berger, K. Johns, A. Swartling, E. Hammond, K. Pittman. Third row—H. Moncivich, N. Fisher, C. Nelson, J. Hagemeyer, F. Fiess, C. Campbell, H. Rush, A. Moncivich, J. Preston, B. Queern, M. Linville, M. Cavalovitch, J. Morris.

## Kappa Delta



The Kappa Delta's have had a very successful year under the leadership of Lucy Berger. The seven new pledges gave a slumber party entitled "Trip to Toyland" and a "Black Friday" pledge dance as their main activities. The Christmas Serenade, the annual open house, and the Spring formal "Dreams along the Delta," were the highlights of the year.

Joan Preston and Barbara Queern were elected to Kalon; Sally Guttormsen, Barbara Queern and Joan Preston were tapped for Gamma Sigma Kappa. Joan was also elected the top junior English student and served as co-chairman of CLEW. Barbara Queern served as president of AWS. Sally Guttormsen will be president of the chapter this year.





OFFICERS—M. Cavalovitch, K. Johns, J. Preston, L. Berger.



That K.D. smile



See you at the beach, girls!

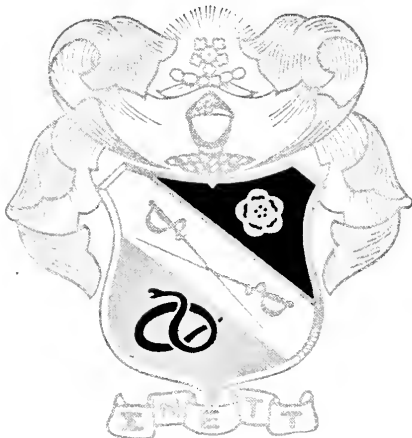


Just like mother used to make.



*First row*—D. LaBrie, R. Cloues, D. Secor, J. Woolcock, M. Thompson, B. Barnett, R. Lekamp, J. Fady, M. Dorlester, J. France, C. Billings, W. Longanecker, C. Hoernaman, D. Winslow. *Second row*—E. Wright, W. Butterweck, J. Barnes, D. Greenberg, M. Pollack, Mrs. Matin, C. Perry, A. Pagiluca, F. Burr, A. Cullis, G. Gay. *Third row*—J. Foster, D. Altieri, M. Baron, D. McNinch, A. Tennenbaum, R. Reddington, D. Lipton, D. Rattiner, V. Archdeacon, L. Schaumberg, W. Sheppard, J. Simchock, A. Anderson. *Fourth row*—F. Bell, W. Weaver, J. Frankel, W. Fainglas, J. Marvel, A. Celestin, E. Trushel, J. Montaquila, J. Schollaert, W. Thomas, J. Hicel, H. Segal, J. Miller.

## Sigma Nu



Rushing started in the fall semester with a pledge class of eighteen men. The new pledges gave a dance with costumes and decorations of an oriental theme. The chapter room was once again decorated for the annual Bowery Brawl. The White Rose formal was held at a Wheeling hotel to climax the Sigma Nu social calendar. The height of the Fall season was Epsilon chapter's seventy-fifth anniversary celebration, drawing alumni from many states for a weekend of festivities.

For the second year the college social chairman is a brother and another became president of the Varsity "B" club.



OFFICERS—C. Perry, D. Altieri, F. Burr, A. Cullis.



You've got him, Mark!



Typical Bethany fun.



Informal chapter meeting.



First row—G. Morgan, C. Spragg, R. Kreiger, C. Cox, N. Incorvati, W. Sgro, B. Ross, R. Ciripompa, R. Phillips, W. Crouthamel, R. Goin, P. Cocco, R. Shillinger, V. Barbetta. Third row—R. Gurney, J. Falbo, R. Strockbine, J. Herman, J. Kurey, D. Mitry, D. Dodge, V. Frediani, D. Piacquadio, G. Graham, J. Floore. Fourth row—J. Lindeman, W. Rudolf, W. McNeil, H. Walker, J. Stetsko, C. Donaldson, G. Henne, R. Schmidt, R. Shaffer.

## Phi Kappa Tau



Phi Chapter of Phi Kappa Tau has been very active in the past year. Twenty-one freshmen pledged and they took an active part by having a Novelty Dance. The pledges then declared house clean up and repaired it as their pledge project. The chapter held the annual Christmas party for the Wheeling Orphanage, as well as their annual Open House. Phi Tau Weekend was held on April 17 and 18. The chapter chose Joyce Peterson as the Phi Kappa Tau Outstanding Freshman girl. Phil Cocco was chosen by his brothers as the outstanding senior Phi Tau.



OFFICERS—P. Cocco, B. Phillips, D. Ciripompa, C. Donaldson.



What will the Dean think?

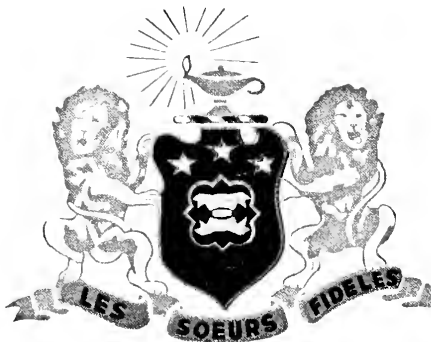


The Phis get their money's worth.



First row—N. Deenis, M. Barnett, P. Muckley, D. Boffo, P. Pinter, E. Gaspich, R. Colebank, B. Cannon. Second row—A. Lewis, C. Nall, C. Lawson, S. Catey, A. Adkins, Mrs. Johnson, R. Dennis, S. Harvey, N. Metcalfe, B. Aberli, P. Henkle. Third row—W. Tener, J. Ferguson, S. Crawford, S. Schlock, K. Sempliner, N. Whitman, L. Hamlin, N. Null, N. Davis, C. Kelley, C. Myers, S. Hiltz, V. Lerch, E. Pugh, G. Davis, D. Rosselet.

## Phi Mu



The year started with the welcoming of our new house-mother, Mrs. Marie Johnson, at an informal party.

Under the leadership of Wilma Tener, the chapter held its annual Winter Serenade, Hoedown, Steak and Bean Dinner, and Spring Dinner Dance. The fifteen pledges were honored at a roller skating party.

The chapter captured the WAA championships in volleyball and basketball, and regained possession of the Scholarship Cup. They also won the women's trophy at Greek Sing.

Marianne Cunningham was editor of the "Harbinger." Chapter members held offices in Alpha Psi Omega, Canterbury Club, SNEA, Sock and Ruskin, and Ministerial groups.

Anne Adkins was elected president for the new year.



OFFICERS—W. Tener, N. Metcalfe, C. Kelley, C. Nall.

Mom looks over some old Phi Mus.



The winners meet the family.

Who has to go on a diet?





*First row—A. Blasier, E. Erskine, K. Adams. Second row—P. Hiney, S. Lloyd, A. Wilhelms.*

## *Lambda Epsilon Omega*

A women's social organization was founded at Bethany this year. Lambda Epsilon Omega is the first local chapter at Bethany in many years. They were given affiliate membership in Pan-Hellenic Council and eventually would like to become a chapter of a national sorority. Mrs. Hauptfuerer served as sponsor and helped to plan their first social affair, an Oriental pledge dance.





President Mike Berg

*First row—W. Campbell, W. Jonnson, M. Berg, P. Cocco, R. Rddington. Second row—R. Kindleberger, B. Ringler, R. Bragg, J. Schollaert.*

## *Inter-Fraternity Council*

## *Pan-Hellenic Council*

C. Cory, A. Eakin, B. Hanna, L. Berger, P. Henkel, W. Tener, S. Guttormsen, A. Blasier.

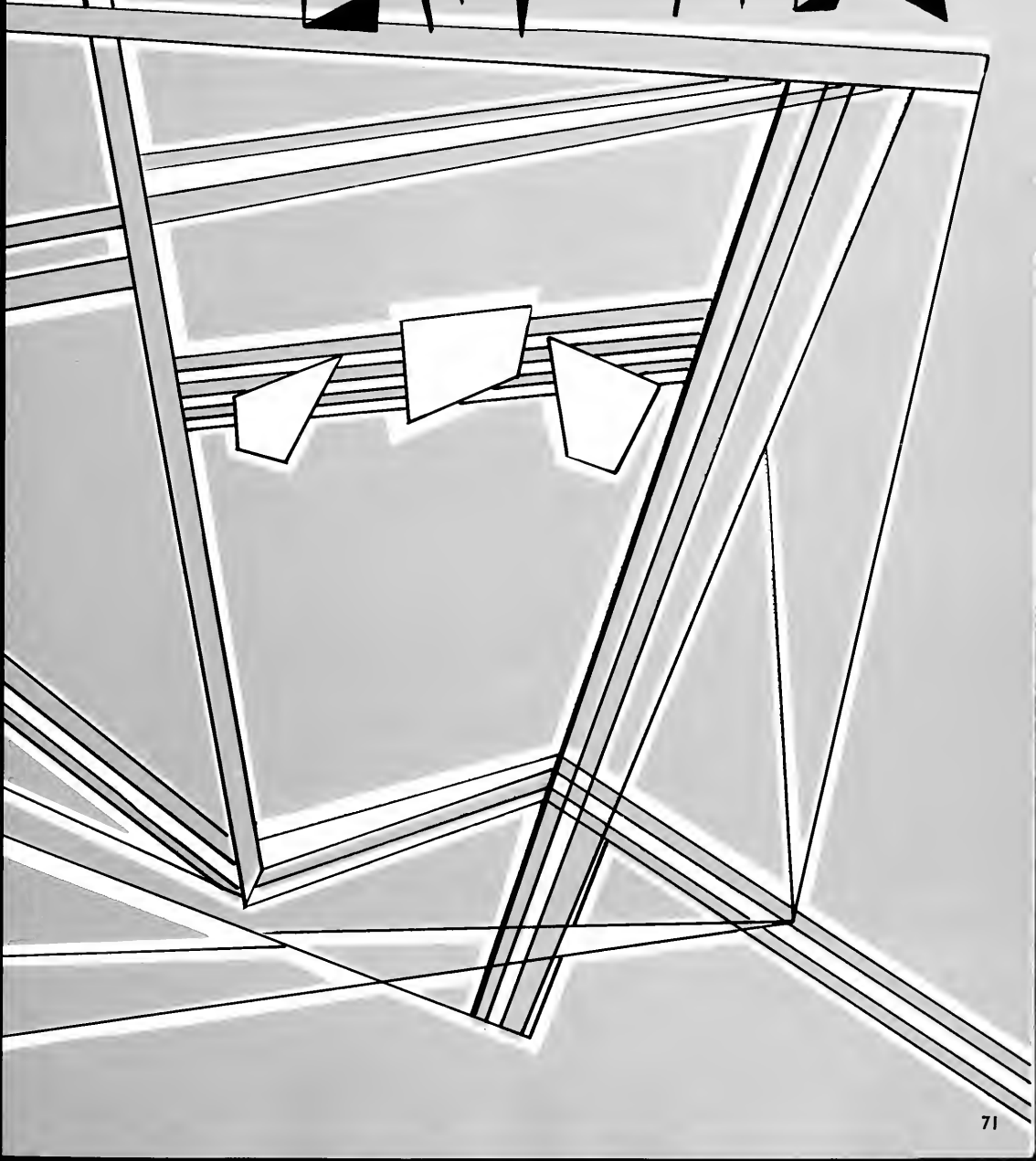


President Lucille Berger





# ACTIVITIES



## Gamma Sigma Kappa



*First row*—J. Thompson, M. Cavalovitch, J. Hollandsworth, C. Petropoulos. *Second row*—C. Parkins, K. Woolery, L. Runk, R. Hill, G. Terdiman.

Gamma Sigma Kappa is the National Scholastic Honorary Fraternity on Bethany's campus. A student must have a 3.25 average for four consecutive semesters to be eligible for membership. In no semester may a student fall below a 3.0. No more than ten per cent of the student body may be taken into this fraternity. The college is working toward having the organization become part of Phi Beta Kappa.

## Beta Beta Beta



*First row*: L. Runk, S. Richardson, G. Terdiman. *Second row*—J. Hollandsworth, A. Riesner, A. Springer, P. Weiler, L. Lewis, R. Blum, S. Guttormsen, F. Yarussi.

Beta Beta Beta is an affiliate of the National Beta Beta Beta Biological Society. Under the leadership of Frank Yarussi its members carried out the main function of doing biological research and presenting papers on their findings. In order to become a member of Tri-Beta, one must maintain a "B" average in Biology courses.



## Alpha Psi Omega

Bethany has an active chapter of Alpha Psi Omega, national dramatics fraternity. They help to sponsor the dramatic works undertaken at the college. This year *Yeoman of the Guard*, *Twelfth Night*, and *Hedda Gabler* were presented. Membership in the fraternity is achieved by earning points in acting and in participation in play production. Roland Pfile served as president and Mr. Babington assisted as faculty advisor.

First row—R. Hibler, C. Marshall, J. Hollansworth, D. Updegraff. Second row—S. Harbison, W. Cowan, C. Kelley, J. Thompson, Mr. Babington.

## Sock and Buskin

Sock and Buskin was organized this year under the direction of Mr. John Babington. It is an active dramatic organization comprised of students with an interest in one or several of many fields of dramatics, such as acting, directing, staging, make-up, costuming, etc. Sock and Buskin hopes to eventually become capable of taking complete charge of all phases of all dramatic productions here at Bethany.



First row—C. Kelley, J. Thompson. Second row—C. Marshall, A. Blasler, K. Sempliner, J. Adams, P. Hiney, B. Steigerwaldt, M. Tacey, D. Rosset, J. Bauer. Third row—Mr. Babington, W. Cowan, C. Kusk, D. Tamer, E. Erskine, S. Lloyd, A. Eakin, S. Harbison, D. Brand, L. Strange, R. Hibler, T. Nichols, D. Updegraff.

## Kalon

Kalon is an honor society on Bethany's campus which recognizes leadership in activities, character, and scholarship. The members are selected on approval of both faculty and students. The requirements are on the basis of a high sense of moral leadership. The school gave a formal banquet in honor of the members this spring. Bob Head led the society as president.



*First row—D. Holt, C. Cory, J. Hollandsworth, W. Tener, B. Hanna, A. Eakin, D. Hill, T. Blowers. Second row—E. Ihle, C. Otey, D. McCreedy, T. Cullis, M. Berg, R. Hill, D. Greenberg, R. Head, R. Ciripompa, F. Yarussi.*

## Who's Who



*First row—D. Holt, D. Greenberg, J. Hollandsworth, B. Hanna, D. Hill, F. Yarussi. Second row—G. Seminara, A. Cullis, M. Berg, R. Head, R. Hill, R. Ciripompa.*

This year twelve students were selected from Bethany to be represented in Who's Who in American Colleges and Universities. Selection is made by a review of Kalon members. Additional nominees were selected from those students holding prominent leadership positions.



C. Wratten, C. Henson, S. Catey, J. Thompson, T. Marshall.

## Chemistry Club

The purpose of the Chemistry Club is to acquaint interested students on our campus in the various fields of chemistry, such as research, sales, analytical, medical, etc. Under the leadership of Jeff Thompson and the sponsorship of Dr. Draper, various speakers were invited to discuss these topics. This year the Chemistry Club became a Student Affiliate Chapter of the American Chemical Society, which is the national professional organization.

## Chess Club

The Chess was presided over by George Todd with Michael Tuttle acting as Secretary-Treasurer. The Chess team consisting of Dick Gold, Michael Tuttle, Cal Horneman, John Metzner, and Arne Lipson, participated in seven tournaments, winning six. The Chess Club has purchased sets for the Beehive to further the interest in chess at Bethany.



First row—A. Wilhelms, R. Gold, M. Tuttle, B. Semidt. Second row—J. Metzner, D. Bennett, J. Miner, C. Hoeneman, G. Todd.



J. Hillman, C. Lopushansky, D. Tamer, C. Calabrese, A. Spear, R. Franzius, E. Silverg, R. Nesi.

## Discussion Group

The discussion group, an outgrowth of the Debating Society, was founded this year by the president Alexander Speer to discuss subjects of a cultural nature not covered in the ordinary college curriculum. The most important event was a discussion of *Sanctuary*, led by Mr. Mullen. Other sessions included poetry readings, discussions of art, literature and metaphysics.

## Canterbury Club

Once a month the Canterbury Club Members meet for devotions and a communion service. The club helps Episcopalian students create a sense of unity and fellowship. Members frequently visit Episcopal churches in the surrounding area to observe significant religious occasions. The founders and sponsors of this organization are Miss Woods and Mr. Taylor.

Rev. Thorn conducts services.



*First row*—B. Aberli, Mr. Taylor, Miss Woods, Rev. Thorn, A. Wilhelms. *Second row*—V. MacGregor, T. Waddell, A. Lewis, P. Costello, A. Dilg, J. Fisher, W. Nern.



*First row*—C. Schiefen, G. Dulfec, B. Steigerwaldt. *Second row*—L. Solinger, D. Prandine, A. Maloney, P. Weiler.

## Newman Club

The Bethany Newman Club is an organization of Catholic students who have joined together to further the religious life of each member. This year the club held bi-weekly communion breakfasts. The officers are President, Pat Weiler; Vice-President, Pat Prewit; Secretary, Henry Hidler; Treasurer, Frank Maranaccio. Father Frederic of Wellsburg serves as advisor for the group.



## Varsity "B"

Once again the Varsity "B" has proved to be a valuable asset to the college in boosting the student morale. Under the leadership of Abby Urbanic the club has raised its own funds through the sale of programs and refreshments at sport activities as well as through their annual variety show. The organization upholds one of Bethany's traditions by making the freshmen adhere to hazing regulations.



First row—R. Ciripompa, K. Woolery, R. Goin, G. Duffey, A. Urbanic, D. McCready, R. Phillips, R. Hill, C. Otey. Second row—S. Lisker, V. Black, C. Donaldson, P. Hoffman, A. Anderson, E. Ihle, D. Rowland, R. Hibler, D. Evans, R. Shaffer. Third row—D. Dodge, W. Tuthill, D. Hastings, W. Young, J. Kurey, C. Trosch, J. Haniford, J. Falbo.

## Economics Club



First row—D. Rowland, C. Jenkins, C. Friberg, B. Young, A. Cullis, R. Ciripompa, W. Kroose, B. Wolff, S. Bell. Second row—S. Lisker, R. Phillips, S. Nott, L. Craig, J. Ciripompa, T. Wetzel, S. Rosenberg. Third row—D. Evans, C. Kohler, A. Tannenbaum, K. Dunlap, W. Rudolph, G. Duffee, W. Sheppard, D. McCready.

With Ted Cullis acting as president, the Economics Club has seen another active year. Featured among many outside speakers was Don Farrington, a Bethany alumnus, who is now employed with Esso, Standard Oil of New Jersey. The club examines many phases of the business world and helps members come to some understanding of what they will face upon graduation.

## I.R.C.

The International Relations Club is composed of students interested in discussing topics of international note on various subjects including politics, economics and social questions. Panels debate the topics and questions and comments are voiced by the other members. Periodicals and literature are received from the Carnegie Institute of International Peace, and representatives are sent to the annual regional conferences. Tom Blowers served as president with Dr. Shaw and Mr. Young as faculty advisors.



*First row*—S. Vittoria, C. Bariman, Mr. Young, S. Rosenberg, V. Schanck, T. Blowers, B. Young, E. Pugh, D. Rosselet. *Second row*—B. Hanna, W. Weaver, D. Evans, K. Woolery, W. Tuthill, S. Lisker, F. Bell, G. Papamikrouli. *Third row*—K. Dunlap, L. Fuchs, J. Marvel, R. Hill, S. Harbison, C. Billings, G. Zacharopoulos, A. Dilg, C. Perry.

## Language Club



*First row*—P. Hiney, N. Levy, M. Terris, V. Schanck. *Second row*—R. Nesi, D. Rosselet, C. Bobbio, L. Craig, N. Null, J. Scott, D. Hoffman, C. Petropoulos.

Under the leadership of President Linda Craig, and the Faculty Advisors, Miss Margaret Woods and Mr. William Ferris, the Language Club has attempted to bring the cultures of French, Spanish, and German speaking countries to the students of Bethany.

In place of the traditional Christmas Serenade, this year the members planned a Spring serenade using popular songs of the different countries. Highlight of the year was the dance featuring decorations and favors appropriate to the Continental theme.

# Student Board of Governors



*First row—A. Tannenbaum, K. Nations, W. Johnson, G. Graham, M. Mishkin, A. Reisner, V. Lerch, C. Myers. Second row—C. Nelson, S. Scott, J. Huff, E. Ihle, R. Phillips, D. Greenberg, E. Hurley, M. Cavalovitch, L. Lewis, B. Scott, A. Adkins.*



Ed gets a few tips from his predecessor, Dave.

Student government is composed of two representatives from each fraternal organization and the independent associations. The main function of this important organization is to coordinate student and faculty thought and to promote better cooperation and relationships between them. David Greenberg served as president this year and is succeeded by Ed. Ihle.

This year improvement in the Bee Hive, especially in the form of a ventilator, was a key project of the S.B.O.G. supported by both administration and students.



They who laugh first, come in last.

## Social Committee



T. Wetzel, C. Nelson, N. Remke, R. Hill, D. Altieri, P. Neal, B. Benson.



Secretary Dawn Hill and Chairman Dan Altieri.

Daniel Altieri served as chairman of the campus social committee with Dawn Hill serving as secretary. The group is made up of one representative from each fraternity and sorority on campus and one representative of each independent group. Its main purpose is to plan the social calendar. Some of the events it sponsored were the Woody Herman and Stan Kenton dances, the annual picnic in the Coal Bowl, and informal dances and parties held in Phillips' Hall and the Bethany House. Mrs. Webster is faculty advisor.



## S.N.E.A.

Student National Education Association is open to education majors and any others interested in educational problems. The topic for the year was in "Current Problems in Education." Guest speakers discussed segregation, the race for teaching phonetics in the reading program. A highlight of the year was a Christmas party for the children of the Bethany school.

*First row*—J. Hollandsworth, P. Hiney, E. Samuel, B. Clark, A. Eakin. *Second row*—S. Kelly, J. Morris, B. Queern, D. Hill, N. Davis, P. Henkle. *Third row*—M. Cavalovitch, J. Hagemeyer, M. Linville, F. Fiess, L. Berger, K. Johns, B. Hurley, J. Ziff.

## W.A.A.

The Women's Athletic Association provides intramural sport competition for all women. This year's program included hockey, basketball, swimming and softball. They also held a party for all freshman women in the Fall, tribunal for freshman women, basketball games with nearby colleges.



*First row*—K. Johns, J. Arnold, B. Hanna, S. Catey, S. Kuhn. *Second*—M. Heady, L. Lewis, S. Stanhagen, N. Remke.

*First row*—C. Cory, E. Kinney, F. Fiess, B. Queern, L. Lewis. *Second row*—B. Wollfe, M. McConnell, M. Barnett, S. Foley.



## A.W.S.

The AWS includes in its membership all women students. The board is chosen by the students and sets all rules followed by the women, penalties for infractions of rules are also established. AWS carnival was held on April 30 under the direction of Barbara Clark. May Morning Breakfast, honoring senior women was held on May 2. Francis Fiess served as president for the year.



*First row*—P. Neal, G. Devine, P. May, R. Rodefer, Mr. Hauptfnerer, J. Graham, A. Fuchs, J. Blair, D. Llewellyn. *Second row*—D. Capen, V. McGregor, H. Thorpe, K. Nations, J. Cerstivik, S. Wheeler, R. vanFossen, D. Updegraff, J. France. *Third row*—H. Kirsch, W. Corbin, R. Rhodes, F. Burr, R. Runk, J. Mann, K. McCall.

## *Male Chorus*



**CHORD-O-VANS**—G. Devine, R. Runk, D. Updegraff, D. Capen.



Concert Choir

# Independent Women

With the cooperation of the Independent Men, the Independent Women took over arrangements for the annual Bohemian Ball. A party for unaffiliated freshman women was given at the close of Formal Rush Week. A contest was held for "Bachelor of the Year" with one man chosen from each fraternity as candidates.



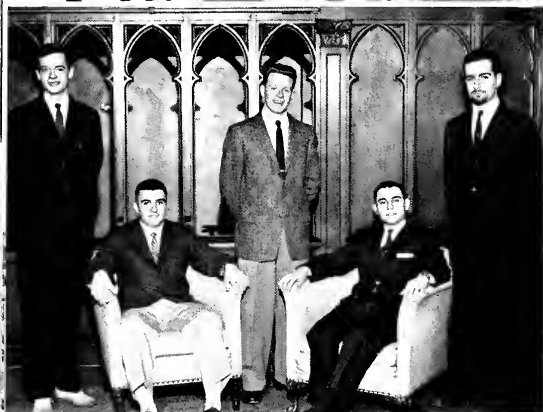
First row—N. Levy, J. Thompson, J. Scott, J. Huff. Second row—J. Miner, C. Bobbio, L. Lewis, D. Hoffman, B. Benson, D. Falser.

President Barbara Benson crowns "Bachelor of the Year" Lou Trosch.





*First row*—S. Vittorio, C. Lopushansky, T. Blowers, A. Reisner, A. Stier. *Second row*—D. Scott, H. Lieberman, R. Nesi, E. Silverg, J. Jones. *Third row*—C. Barimani, A. Spear, F. Hoffman, D. Tamer, M. Mishkin, R. Franzius.



**OFFICERS**—A. Spear, C. Lopushansky, T. Blowers, A. Reisner, R. Nesi.

## *Independent Men*

The Independent Men's Association, this year under the leadership of Tom Blowers, gave the traditional Bohemian Ball. This year the men received the W. Kirk Woolery Scholarship Cup for the high academic standing among men's organizations.



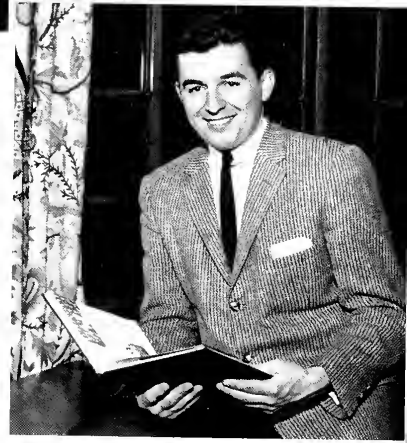
Bohemian Ball



# Bethanian Staff

Phil Cocco—Editor

First row—J. Updegraff, M. Barrett, P. Perry, W. Jonnson, M. Armstrong.  
Second row—B. Wolff, D. Prandine, F. Sulzer, B. Henk, J. Miner, B. Heitzenroderm, B. Steigerwaldt.



First row—P. Perry, P. Cocco, M. Barrett. Second row—R. Wuester, M. Herwitt, C. Jorgenson.



# Bethanian

E  
d  
i  
t  
o  
r  
s



*First row—J. Preston, M. Walliser, M. Armstrong, J. Taylor, B. Henk, S. Stevick. Second row—A. Spear, B. Holt, M. Pollack, S. Eliassen, D. Tamer, L. Lewis, C. Barimana, B. Steigerwaldt, R. Ciripompa, T. Parker.*

## *Tower Staff*



SANDRA STEVICK  
Editor-in-Chief

## *Student Board of Publications*

*First row—S. Harbison, S. Stevick, C. Nall, P. Cocco. Second row—T. Parker, R. Ciripompa, P. Perry.*



## Class of '60



*First row*—N. Davis, J. Furgeson, E. Samuels, A. Maloney, B. Stein, M. Schaefer, S. Kelly, B. Clark, B. Wolff, B. Hurley. *Second row*—E. Pugh, L. Hamlin, W. Tener, B. Scott, R. Dennis, S. Stevick, J. Preston, C. Nelson, A. Swartling, M. Massay, A. Eakin, J. Dunbar. *Third row*—F. Bell, W. Weaver, J. Perkins, E. Silverg, M. Patton, W. Rudolph, R. Kindelberger, R. Pille, A. Speer, C. Henson, F. Marinoccio, S. Rosenberg, E. Ihle, C. Lopushansky, S. Vittoria.

## Class of '61



*First row*—L. Craig, C. Jorgenson, B. Hannaway, N. Ross, P. Muckley, C. Nall, L. Rollins, S. Richardson, D. Brand, L. Strange. *Second row*—P. Neal, N. Remke, S. Jones, E. Erskine, A. Wilhelm, S. Gough, J. Graham, D. Waldeland, S. Blair, L. Bryson, S. Eliason, H. Rush, N. Fisher, R. Wolff. *Third row*—M. Terris, J. Everson, R. Hilder, L. Troesch, D. Henson, R. Ingram, A. Laytham, C. Troesch, C. Kohler, W. Feinglas, W. Sheppard, M. Barnett, J. Weissman, J. Hamiford.



*First row*—S. Catey, G. Papimakrouli, S. Scott, H. Lukeas, B. Frick, C. Moore, J. Vasoll, L. Malone, B. Cartmell, M. Wagner, M. MacConnell. *Second row*—S. Lisker, J. Schollaert, J. Aupperle, C. Meyers, S. Prentice, A. Tannenbaum, B. Benson, A. Adkins, P. White, D. Upledgraff, R. Rodeler. *Third row*—R. Reddington, E. Trushel, G. Zcharopolis, Jo Simpchock, A. Celestin, W. Woodside, J. Addy, W. Ehring, D. Jones, M. Dorlester, J. Jones, C. Kasky.

## Class of '62



*First row*—M. Thompson, T. Oliver, W. Schneider, J. Fisher, J. Bauer, S. Lloyd, R. Colebank, S. Sheller, H. Hiller, C. Boyer, H. Lieberman. *Second row*—B. Frazel, B. Henk, M. Lamont, S. Jones, G. Joyce, S. Wood, G. Toll, D. Karn, A. Maloney, D. Prandine, J. Sprague, D. Graff, F. Sulzer. *Third row*—C. Cross, L. Solinger, J. Ziff, R. Halo, S. Lowey, E. Willey, M. Thompson, E. Zeh, S. Ober, L. Deer, J. Bradshaw, M. Tacey, Y. Kasonevic, G. Schichten, M. Zwenburg, H. Milhorn. *Fourth row*—A. Kay, J. Fadke, J. Supple, F. Bruno, P. Jones, L. Biscoe, G. Graham, T. Waddell, C. Witzenberg, C. Calabrese, R. Clouse, J. Stevenson, J. Nuttler, W. Allen.



*First row*—T. Nichols, J. Fady, A. Fuchs, B. Schmidt, P. Moses, D. Ince, D. Sykes, J. Allison, R. van Fossen. *Second row*—K. Linton, B. Stiegerwaldt, S. Knott, B. Heitzenroder, S. Foley, J. Peterson, J. Lerch, B. Parsons, P. Pinter, L. Lloyd, E. Gaspinch, K. Sempliner. *Third row*—M. Barnett, J. Gill, C. Schlock, M. Coughenour, G. Davis, S. Kramer, J. Scott, S. Crawford, N. Null, J. Almer, P. Hiney, J. Vauska, D. Faler, J. Huff. *Fourth row*—C. Hoerneman, J. Rudy, D. Scott, A. Stier, R. LeCamp, C. Brown, C. Daugherty, R. Shaeffer, M. Mishkin, A. Lowe, R. Bollinger, W. Hammil, D. Fielding.

## Ministerial Association

*First row*—Dr. Ice, D. Updegraff, M. Barnett, N. Dennis, J. Gill, S. Kramer, J. Aupperle. *Second row*—R. Smith, J. Thompson, V. Lerch, C. Schlock, P. Muckley, S. Harbison, C. Kusky. *Third row*—R. Hill, A. Mullins, B. Benson, J. Radke, J. Scott. *Fourth row*—V. Black, R. Dennes, S. Prentice, R. Colebank, S. Lloyd, S. Harbison. *Fifth row*—R. Pfile, D. Henne- man, D. Faler, C. Lagfitt, T. Nichols, M. Coughinour. *Sixth row*—T. Waddell, D. Hinson, R. vanFossen, C. Boyer, M. Purser, E. Dietrich. *Seventh row*—G. Miller, J. Schimmel, R. Flowers, J. McIntyre, W. Allen, D. Llewellyn. *Eighth row*—Dr. Booth, Dr. Nickle, Rev. Lemon, J. Addy, Mr. Preston, Dr. Gresham, Mrs. Gresham.



# Ohio Valley Student Nurses



*First row—C. Miller, E. Hanna, K. Sullivan, L. Paisley, J. Freeman, B. Majoris, S. Frudicks, C. Langhurst, Second row—J. Puffenbarger, J. Miller, M. Driscoll, P. Polcyn, L. Lally, A. Rocchio, M. Inley, L. Mastro, J. Mansell, S. Myers, Third row—K. Hartfield, M. Sembar, J. Vensel, J. Smith, S. Fortunato, C. Novington, S. McEnuree, M. Kendrick, C. Savage, J. Harmon.*

The student nurses of the Ohio Valley Hospital in Steubenville commute once a week to Bethany to use the additional facilities and courses offered here. At Bethany the nurses take courses designed to fit into the specialized training which they receive at the hospital. Courses are given in Chemistry, Anatomy, Physiology, Microbiology, and Psychology. The joint nursing plan of the hospital and college is becoming a tradition and a precedent in the training of fine nurses for the Tri-State area.



Dana and Mark entertain the nurses in their "own little way."



Another day is completed at Bethany.



Dr. Draper lectures as the future "Florence Nightingales" listen.

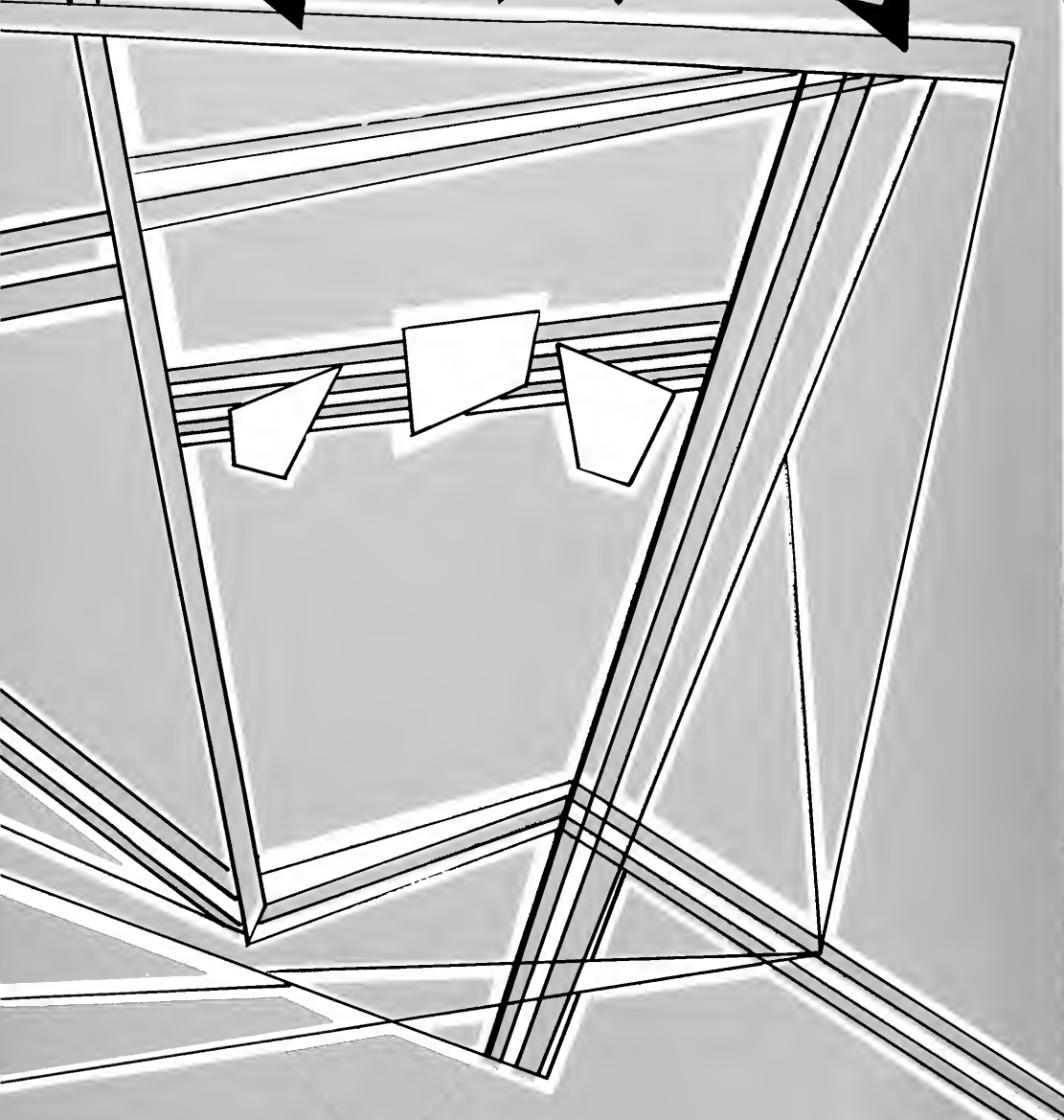


For the practicalities in nursing the girls go to lab.

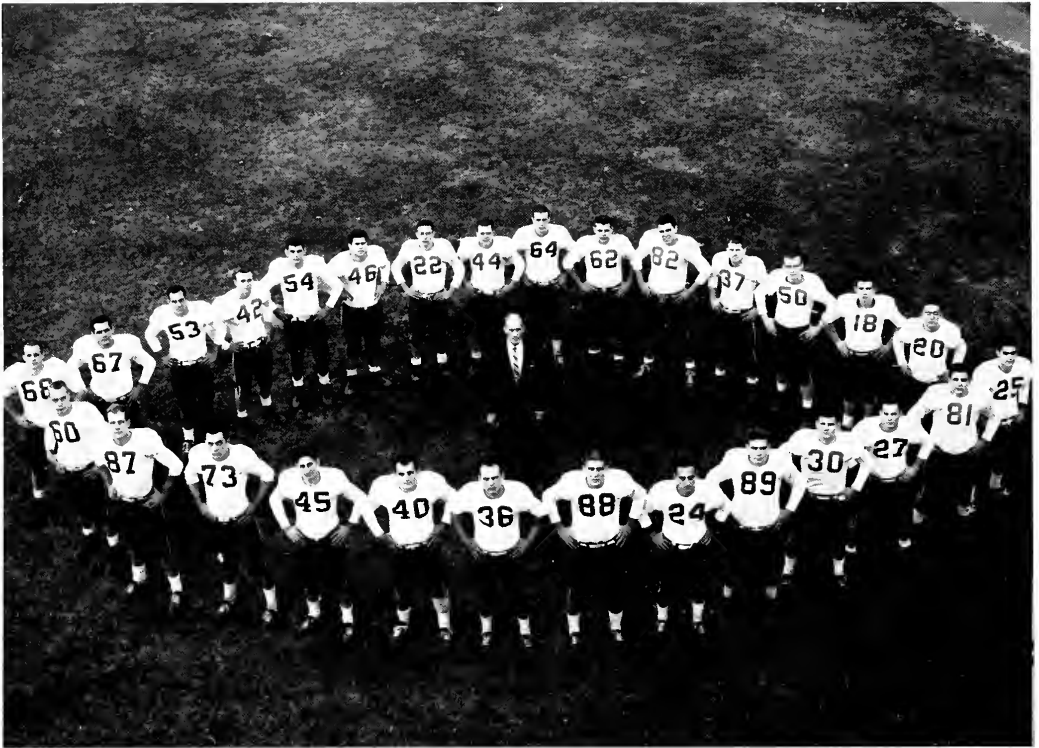




# SPORTS



# Football



Front row—A. Celestin, A. Anderson, C. Donaldson, D. Carneval, R. Goin, P. Hoffman, A. Urbanic, F. Yarussi, J. Goodwin, M. Baran, J. Frankel, J. DeFillipo. Back row—J. Hickel, J. Falbo, M. Wood, W. Longanecker, J. Montaquilla, N. Incorvati, C. Kusky, R. Strockbine, A. Hammond, C. Cox, R. Schmidt, M. Thompson, T. Pitts, J. Floore, H. McKinley, J. Girone. Center—Coach Knight.

This year's Bethany College football team, hurt by injuries to co-captains Andy Urbanic and Paul Hoffman managed to win but one game while losing six and tying one. The one tie came at the hands of West Virginia Wesleyan by a 7-7 battle, in the season opener.

The second game of the season, the Bisons lost to the eventual PAC champs by the score of 52-18. Paul Hoffman set a record in this game by throwing for 252 yards and three touchdowns. The Bisons then dropped two thrillers to Allegheny and John Carroll by the scores of 12-3, and 25-16. It was the Allegheny game that brought an abrupt end to a brilliant career of Abby Urbanic, due to a severe knee injury. Not until after losing to Anderson by a 44-6 score did the Bisons eventually chalk up their initial victory. It came over W&J by a 28-20 count. Guard, Joe Falbo scored the winning touchdown on a pass interception. The Bisons then closed out the season by dropping two exciting offensive battles to Grove City and Marietta, by 26-24 and 44-36 scores.

Quarterback, Paul Hoffman led the team in rushing, passing, and total offense. Arne Anderson, the team's most valuable player was the leading pass receiver, while Bob Goin led the team in scoring with 22 points.



PAUL HOFFMAN

C  
a  
p  
t  
a  
i  
n  
s



ABBIE URBANIC

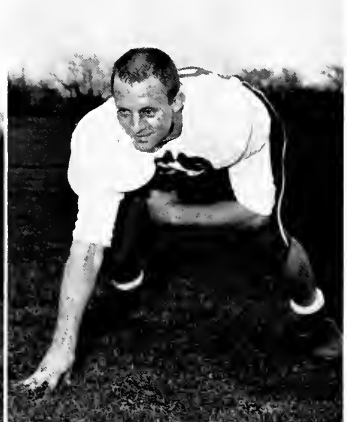


Anderson, Goodwin, Hickel, Montaquilla, Falbo, DeFillipo, Urbanic  
Frankel, Hoffman Goin Yarussi

1959 Bison Starting "11"



*Top row—Frank Yarussi, Bob Coin, Del Carneval.  
Middle row—Joe Falbo,  
Bottom row—Arne Anderson, John Goodwin, John Hickel.*





*Upper left*—Baran brings down ball carrier as Goodwin comes up to recover loose ball.

*Upper right*—Baran is stopped inches short of touchdown.

*Middle*—Jim Gerone knocks down pass intended for John Carroll player.

*Lower left*—Bob Goin breaks through for sizeable gain against Marietta.

*Lower right*—Looks like trouble for Goin and Falbo as huge Grove City interference begins to form.





CAPTAIN BOB GOIN





D. Dodge, L. Briscoe, C. Sprague, R. Goin, J. Haniford, C. Trosch, J. Herman, R. Kindelberger, J. Stetsko, J. Kurey, B. Selfridge, W. Butterweck, A. Urbanic, B. Ringler, R. Shaeffer.



Coach Martin gives Captain Goin the ball used in final game against W. & J.



JOHN STETSKO



BRUCE RINGLER



JOE KUREY

The 1958-59 season was the first year of actual competition in the President's Athletic Conference for the Bisons. Under the leadership of Coach Martin and Captain Bob Goin, the Bisons finished fourth in the conference with a record of seven wins against six losses.

Bruce Ringler was the leading scorer for Bethany with an average of 19.1 points per game. He was also the leading rebounder and shooter. His shooting percentage was also the tops in the PAC. He was named to the PAC first team and the Cleveland News first team.

John Stetsko was the second leading scorer for Bethany with an average of 16.8 points per game. His foul shooting percent of 89.7 was the best on the team. He was put on the Cleveland News second team.

Freshman Joe Kurey was named to the Cleveland News Honorable Mention list.

Bethany..... 87	Allegheny ..... 59	Bethany..... 59	Wheeling ..... 49
Bethany..... 74	Thiel ..... 49	Bethany..... 79	Case Tech ..... 82
Bethany..... 92	Wheeling ..... 95	Bethany..... 88	Davis & Elkins ..... 86
Bethany..... 77	John Carroll ..... 91	Bethany..... 70	John Carroll ..... 74
Bethany..... 69	Wayne State ..... 54	Bethany..... 109	Thiel ..... 76
Bethany..... 58	Washington & Jefferson	Bethany..... 92	Allegheny ..... 75
Bethany..... 63	Western Reserve ..... 48	Bethany..... 76	Western Reserve ..... 79
Bethany..... 75	West Virginia Wesleyan 99	Bethany..... 71	Case Tech ..... 62
Bethany..... 83	Davis & Elkins ..... 91	Bethany..... 59	W. & J. .... 64





DON DODGE



RODGER KINDELBERGER



BILL BUTTERWICK



ABBIE URBANIC

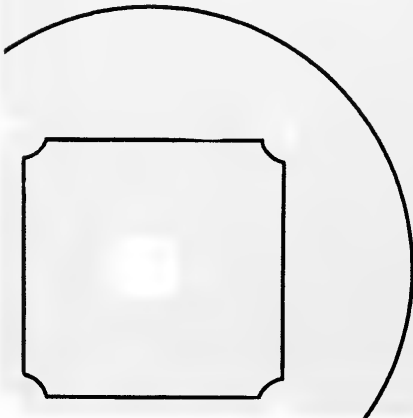
# Baseball



*First row*—A. Hammond, J. Lash, C. Donaldson, D. Carneval, A. Urbanic, P. Hoffman, P. Cocco, V. Black, M. Pollack. *Second row*—D. Piaquadio, J. Floore, R. Strockbine, C. Cox, R. Schmidt, G. Henne, R. Roach, J. Schollaert, L. Traupman, J. Graf, M. Mirich, Coach Knight.

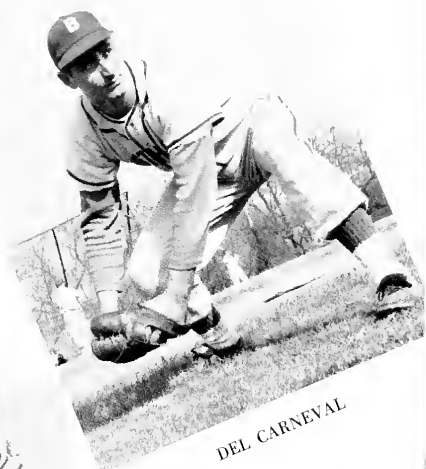
For the second time in as many years the Baseball Bisons turned in a winning season. The final record showed 7 wins against 5 losses, which brought them to second place in the PAC. With no one especially outstanding, it was a team effort with hustle their main weapon.

Paul Hoffman led the team in batting with a .428 average, while on the mound he earned a respectable 3.01 ERA. John Stetsko led the team in pitching with a 2-0 record and a 0.85 ERA. Vern Black also picked up 3 victories while Jim Lash had 2. Captain Abbie Urbanic led the team with 14 RBI's. Graduating seniors are Del Carneval, Phil Cocco, Paul Hoffman, Don McCready, and Abbie Urbanic.





PAUL HOFFMAN



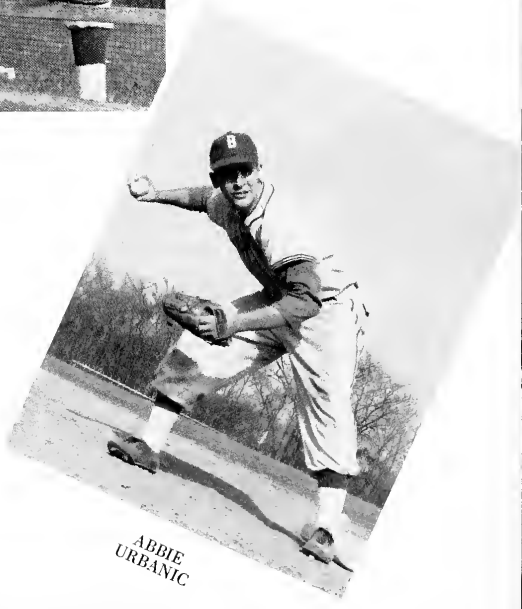
DEL CARNEVAL



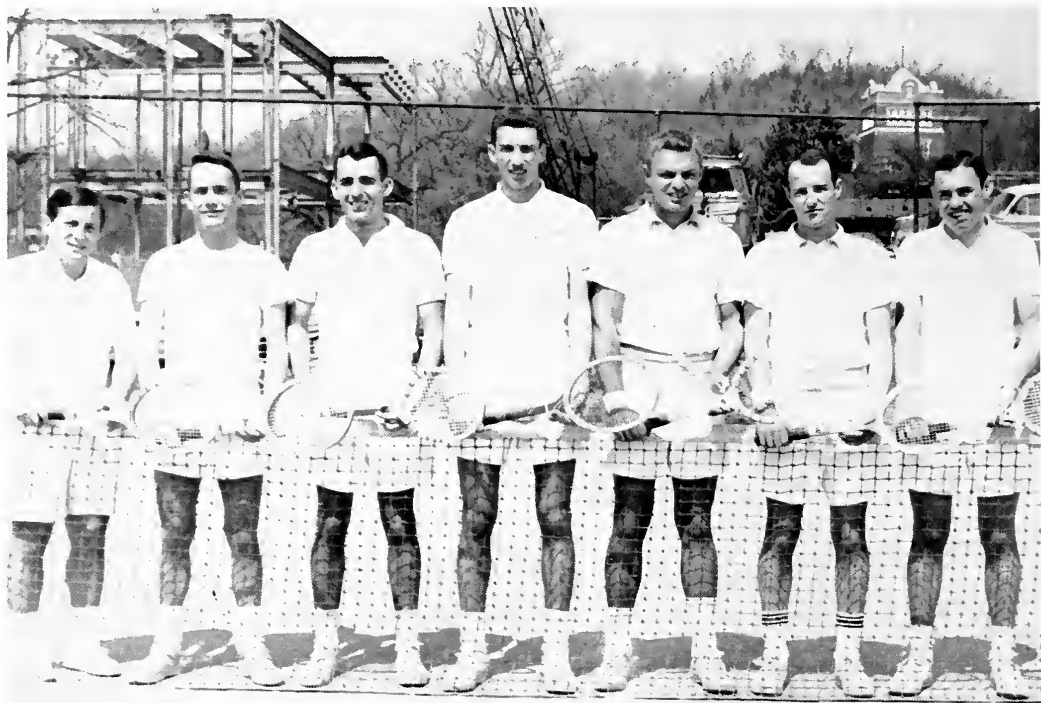
Coach Knight with Captain Abbie Urbanic.



PHIL COCCO

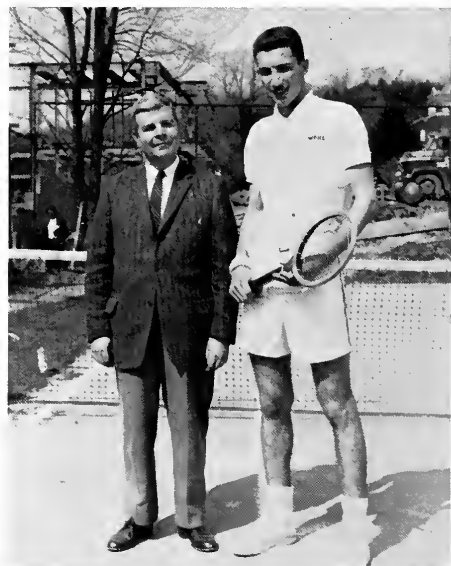


ABBIE URBANIC



I. Goldwasser, J. Marshall, D. Stewart, J. Kurey, C. Otey, M. Barrett, R. Saunders.

The 1959 tennis team again turned in a good record. The team won 8 and lost 3 under the leadership of captain Ira Goldwasser. The high point of the season came in the last match when Bethany turned back a highly favored University of Pittsburgh team 3-1. The two best individual records were turned in by Joe Kurey and Dave Stewart, each only losing two matches. When the season opened this year the team was without the services of two lettermen who graduated. The men who filled the gap were Joe Kurey and Mike Barrett, along with the rest of the team, Dave Dunham, Russ Saunders, Chuck Otey and Dave Stewart. Newcomers to the squad are Karlene Linton, Ken Chernow and Jack Marshall.



Coach Peterson with his promising freshman, Joe Kurey.



CAPTAIN IRA GOLDWASSER



DAVID STEWART

# TENNIS



MIKE BARRETT



CHUCK OTEY



First row—D. Hastings, S. Lisker, R. Rodefer, H. Thorpe. Second row—A. Lowe, D. Rowland, T. Manion, R. Moffat, J. Aupperle. Diving Board—T. Lucas, J. Montaguila, R. Smith, G. Fields. Third row—G. Booth, K. Woolery, W. Kroos, Dean Preston.

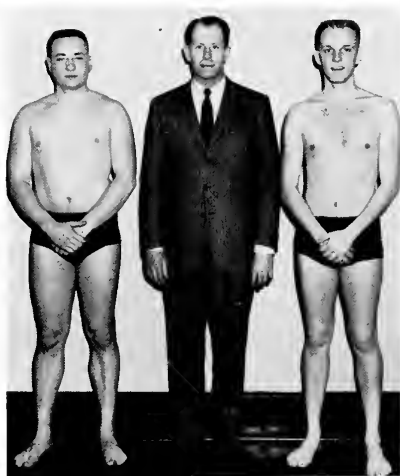
## Swimming

The swimming team posted four wins: W.V.U., Case and both Fairmont clashes. Their losses were to Allegheny, and W. and J. The first PAC finals saw Bethany take third place.

All of the regulars from last year returned along with Harvey Thorpe a breaststroker who set a new team record and Rick Rodefer a freestyler. John Montiquilla, Russ Smith and Gary Fields handled the diving chores.

Every team record of the past was broken by this year's squad.

Fortunately for Coach Dean Preston, only Co-captains Gordon Booth and Kirk Woolery will be graduating. Woolery has earned four letters with the swimming team, since it was organized four years ago.



Dean Preston and co-captains Kirk Woolery and Gordon Booth.

## Golf

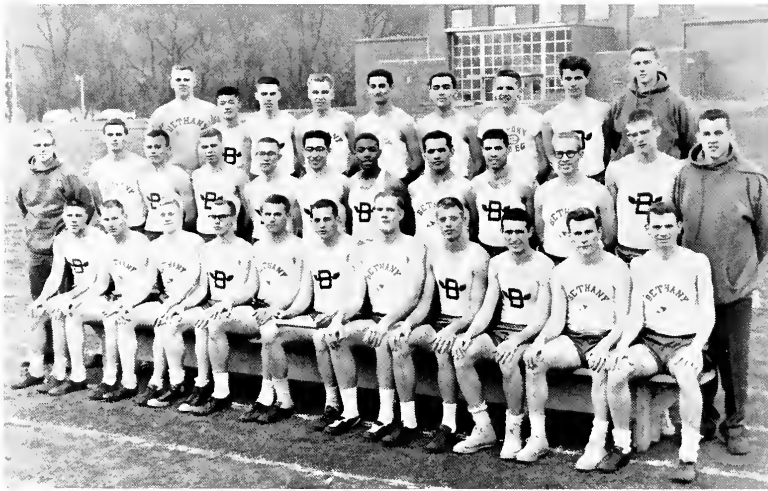


Seated—H. Segal, W. Hamill, C. Batts. Standing—C. Billings, T. Boff, Dr. McAllister, E. Wright, J. Montaquila.

Dr. Lester McAllister, coach, guided the golf team to one of its best seasons. The starting five was composed of Tom Giesey, Clyde Billings, John Montaquila, Wilson Longanecker and Todd Boff. Led by Captain Giesey, the team finished the season by taking third place in the West Virginia state meet which was held at Oglesbay.



Coach Dr. McAllister and future star, Clyde Billings.



## Track

*First row*—D. McNinch, L. Schaumberg, R. Hibler, W. Tuthill, F. Burr, W. Butterweck, A. Anderson, L. Trosch, E. Ihle, J. Haniford. *Second row*—E. Trushel, R. Baldinger, C. Schlemmer, C. Kusky, P. Moses, L. Briscoe, J. Falbo, H. Berman, A. Mullins, P. Jones. *Third row*—R. Kreiger, M. Ryon, F. Bruhn, C. Daugherty, V. Frediani, V. Archdeacon, R. Smith, R. Guernsey, Managers—J. Hickel, K. McCall, R. Sykes.



RICHARD HIBLER—pole vaulter

The Bethany thinclads failed to win a meet this year, but they were within the grasp of victory many times. John Carroll meet was decided in the final event when the Bisons mile relay team was edged out for a 61-65 defeat. The West Liberty Defeat was another very close meet.

Coach Edgar Martin has a little to smile about, since he loses only three lettermen: captain and high jumper, Bill Butterwick; shot putter, Frank Burr; and distance man, Bill Tuthill. The team placed fifth in the state meet, and Carl Trosch took a fourth in the PAC 330.



SPRINTERS—L. Briscoe, F. Bruhn, C. Schlemmer, R. Baldinger.



Shot put—FRANK BURR





Standing—M. McConnell, S. Kuhn, S. Kelly, B. Wolff, M. Remke, M. Lamont, J. Vasoll. Seated—C. Jenkins.

## Cheerleaders



CAPTAIN CAROLYN JENKINS

The cheering squad has once again lifted the student morale to an unprecedented high. Under the leadership of Carolyn (Jinx) Jenkins, captain, the group has faithfully attended all the outstanding sports events. They sponsored the annual reverse week-end and assisted at pep rallies.

Other members of the squad are Sally Kelly, Barbara Wolff, Mary McConnell. Sue Kuhn, Judy Vasoll, Nora Remke, and Mary Ann Lamont. Sally Kelly is the new president.



How the "leisure class" spend their leisure time.

## *Moo Moo Moos*



A touchdown for the Bisons?



Most Likely to Succeed

## *Intramural Results*

<i>Tennis</i>	Phi Kappa Tau
<i>Football</i>	Sigma Nu
<i>Cross Country</i>	Beta Theta Pi
<i>Volleyball</i>	Beta Theta Pi
<i>Swimming</i>	Beta Theta Pi
<i>Basketball</i>	Sigma Nu
<i>Golf</i>	Beta Theta Pi
<i>Track</i>	Beta Theta Pi
<i>Softball</i>	Phi Kappa Tau
<i>Horseshoes</i>	Phi Kappa Tau
<i>Ping Pong</i>	Beta Theta Pi

### *Final Standings*

Beta Theta Pi

Sigma Nu

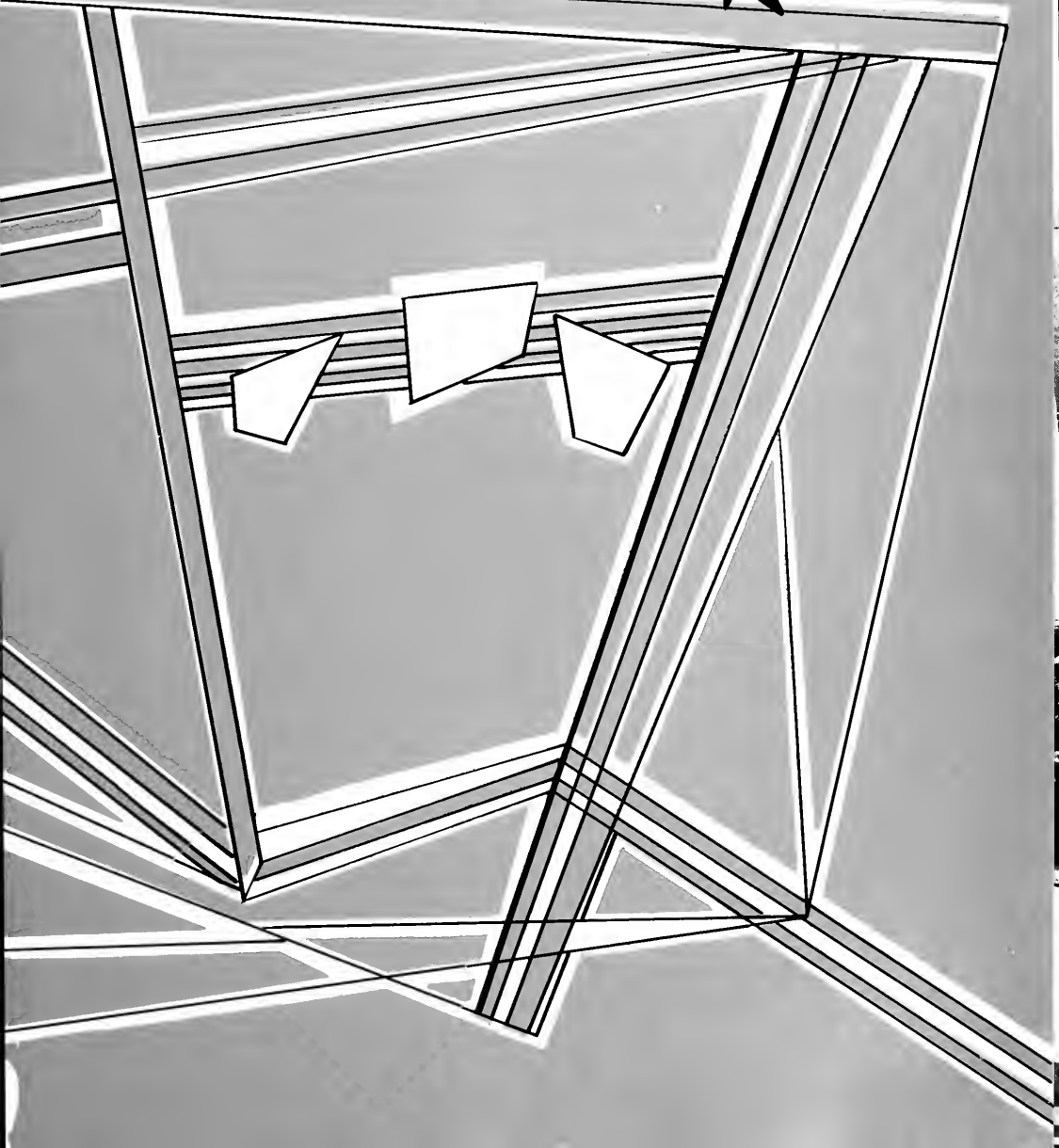
Phi Kappa Tau

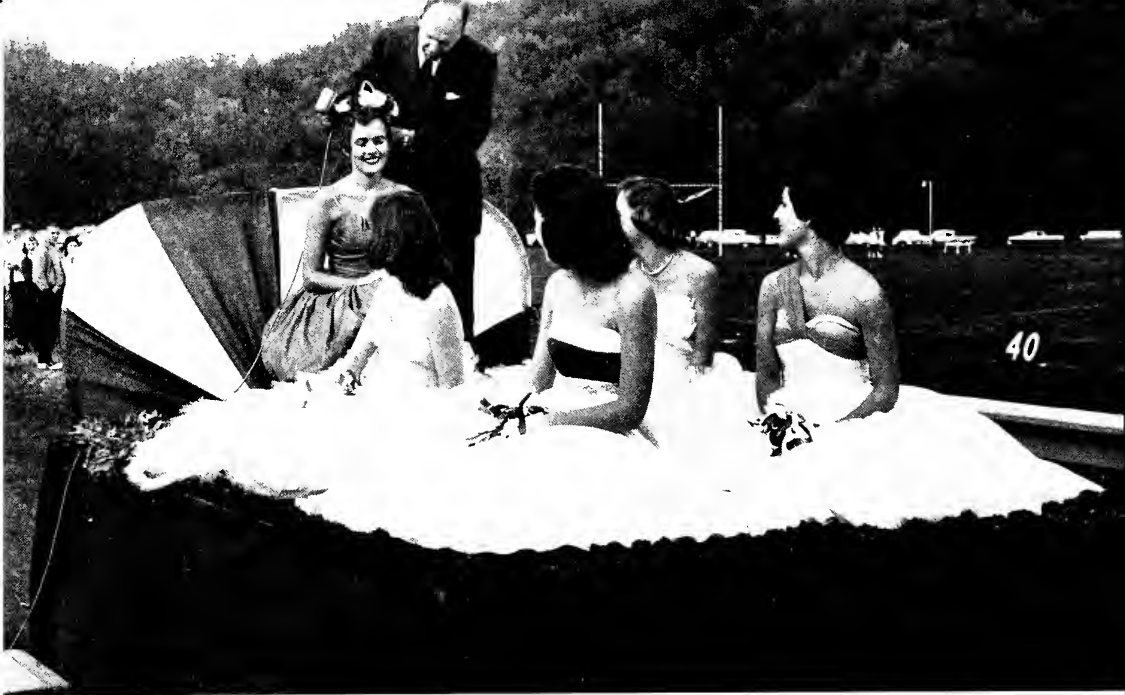
Kappa Alpha

Alpha Sigma Phi



# FEATURES





*Home*





*coming*





1-2-3-kick

*Varsity "B"  
Show*



Otey interviews  
"Fuzzy Taylor"



Washing those men  
out of their hair



Everson gets a mud bath



A new use for hula-hoops



A.W.S. QUEEN SUE KUHN

*A.W.S.*



*Carnival*



Here's pie in your eye



The Zetas ready their float





*Mothers Day*





*Homecoming Queen*

DAWN CARDER HILL



*A.W.S. Carnival Queen*

SUE KUHN



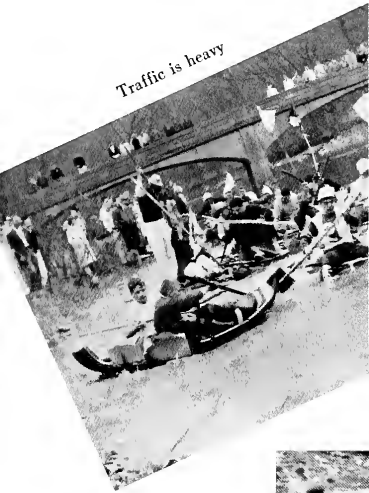
*Queen of Hearts*

ELLEN ZHEY

# Bethany

# Regatta

Traffic is heavy



Think it will float?

Quit rocking the boat!



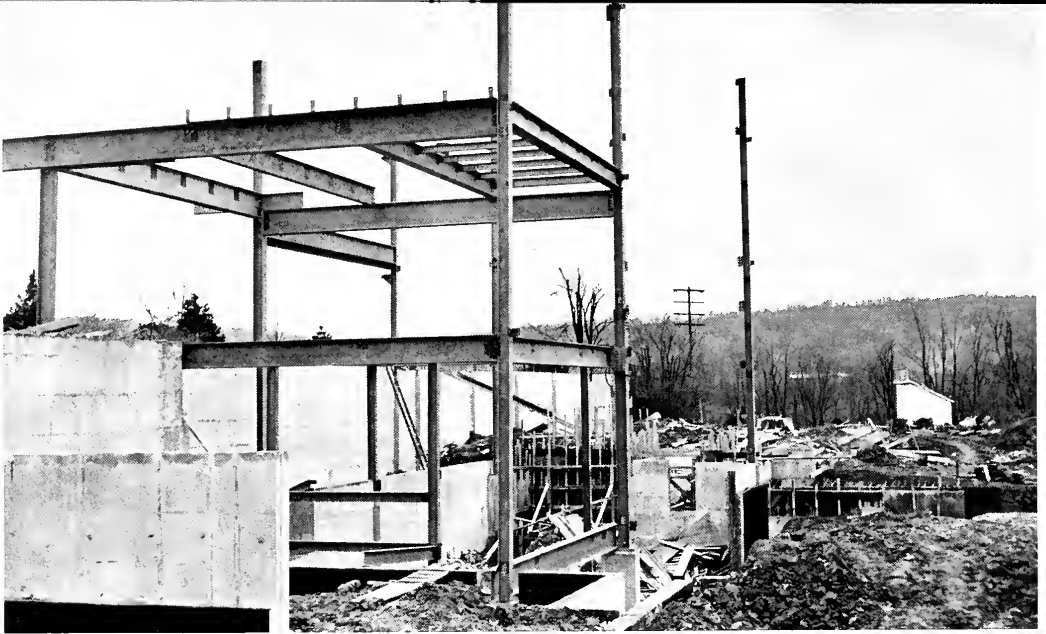
Abandon ship!



Full speed ahead!



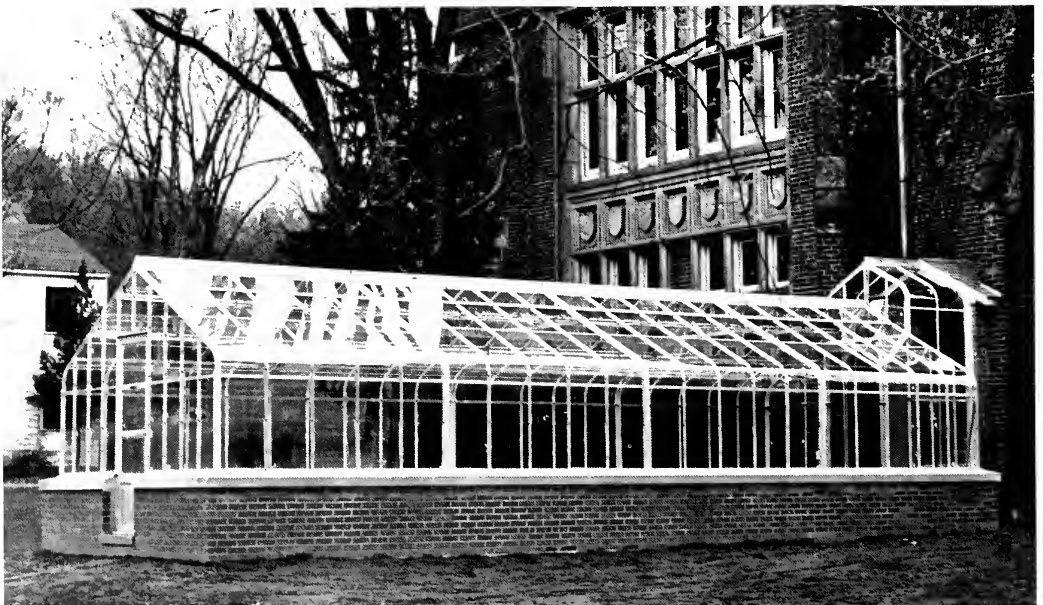
That water looks cold!



Phillips Memorial Library

## *Progress at Bethany*

Weimer Vivarium







Watch this play!



Bring a ladder!



The leisure class



W&J go home



Fall fashions



The moos



Look, ma—no hands!



Mike, give singing lessons



What, me worry!



Twelfth night



Emily and Mickey



Rodger presents the crown



What seems to be the problem?



Looks like trouble



Christmas dinner



Where's Wuester?



Stan gets two



The old soft shoe



Pizza party



Dance time



KD serenade



Goldie

*Commencement*



*Class of 1959*



Senator Johnson receives a Bethany degree.



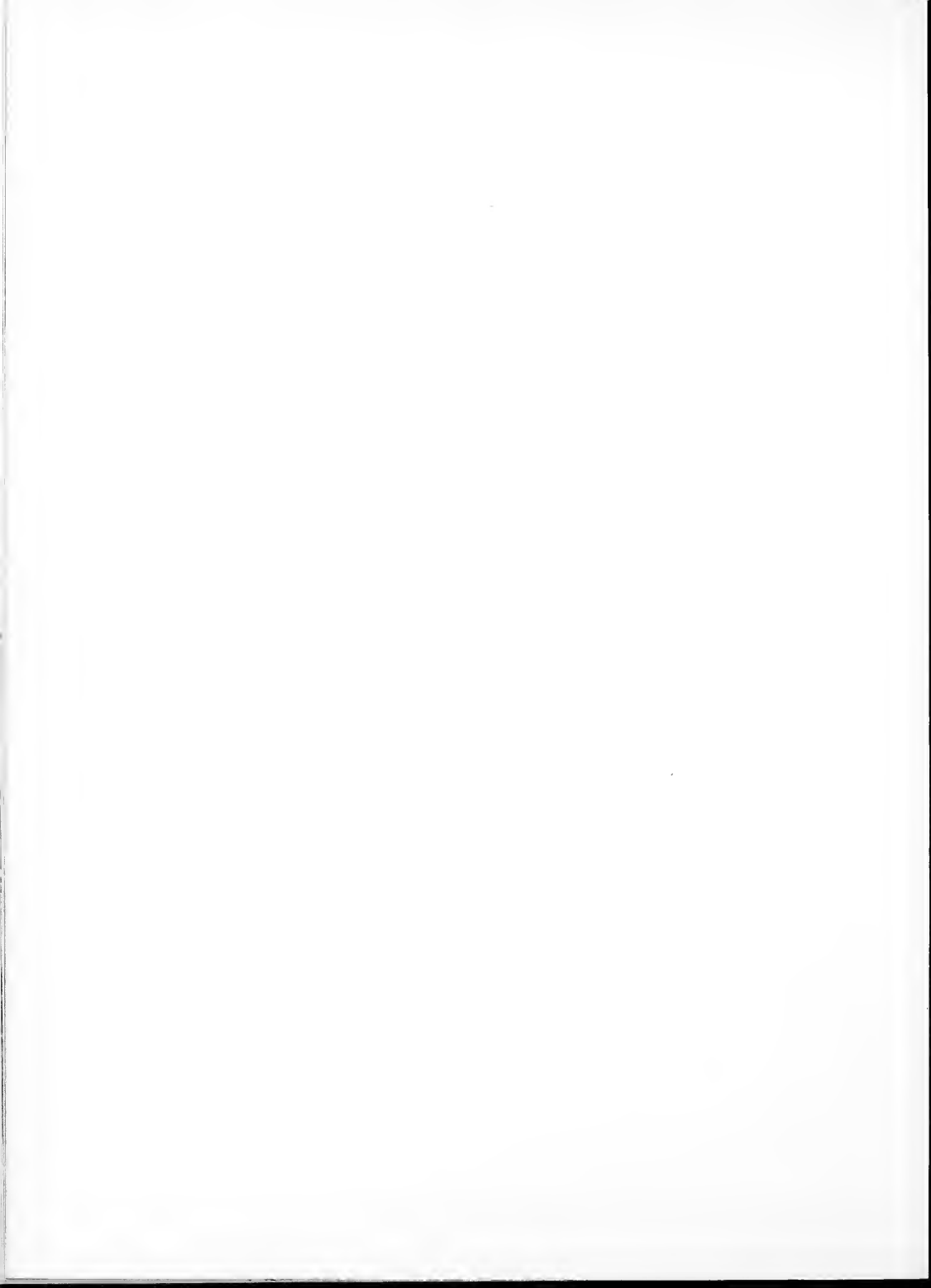
Congratulations, Jane.



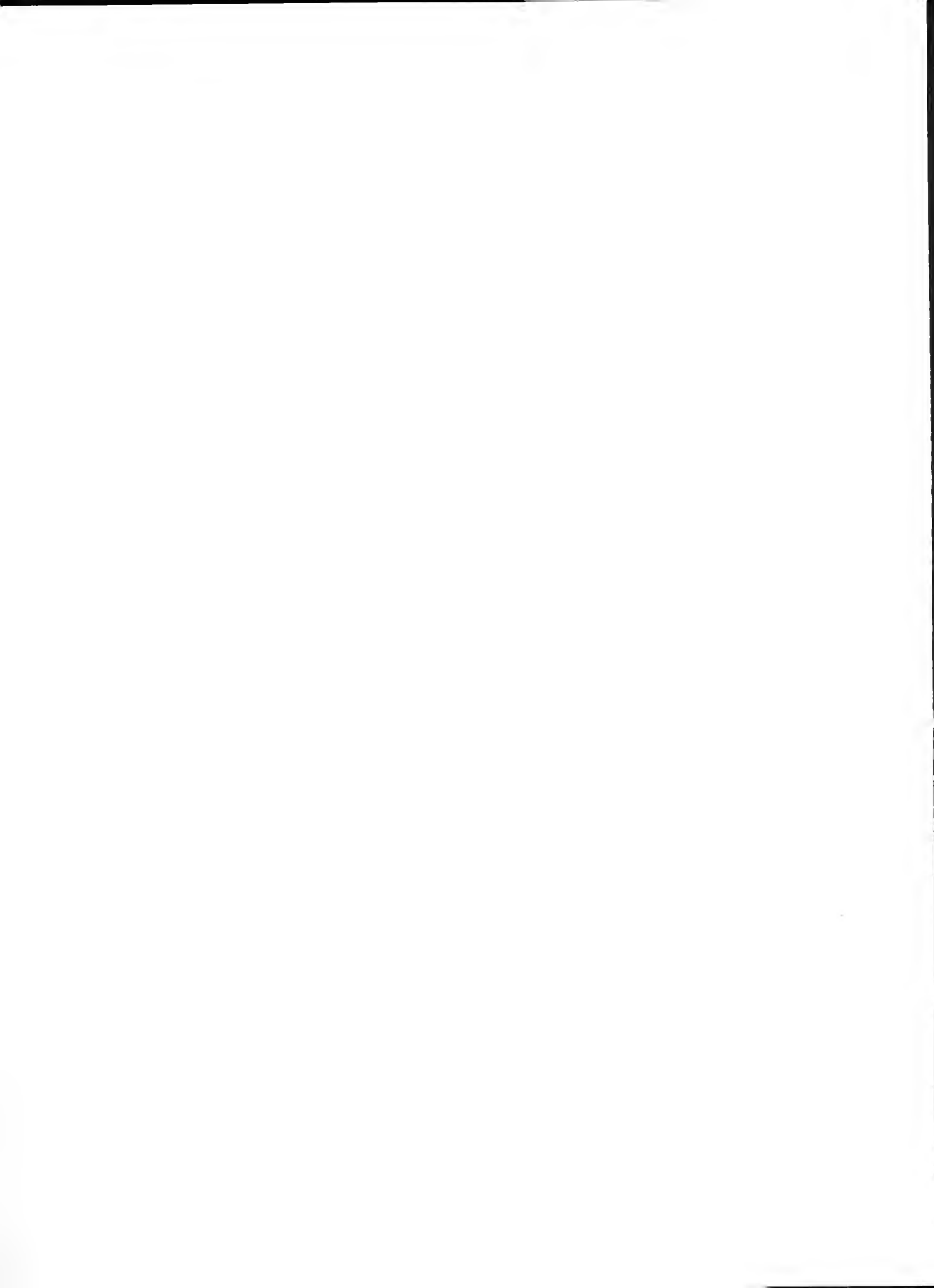
Senator Lyndon B. Johnson addressing the class

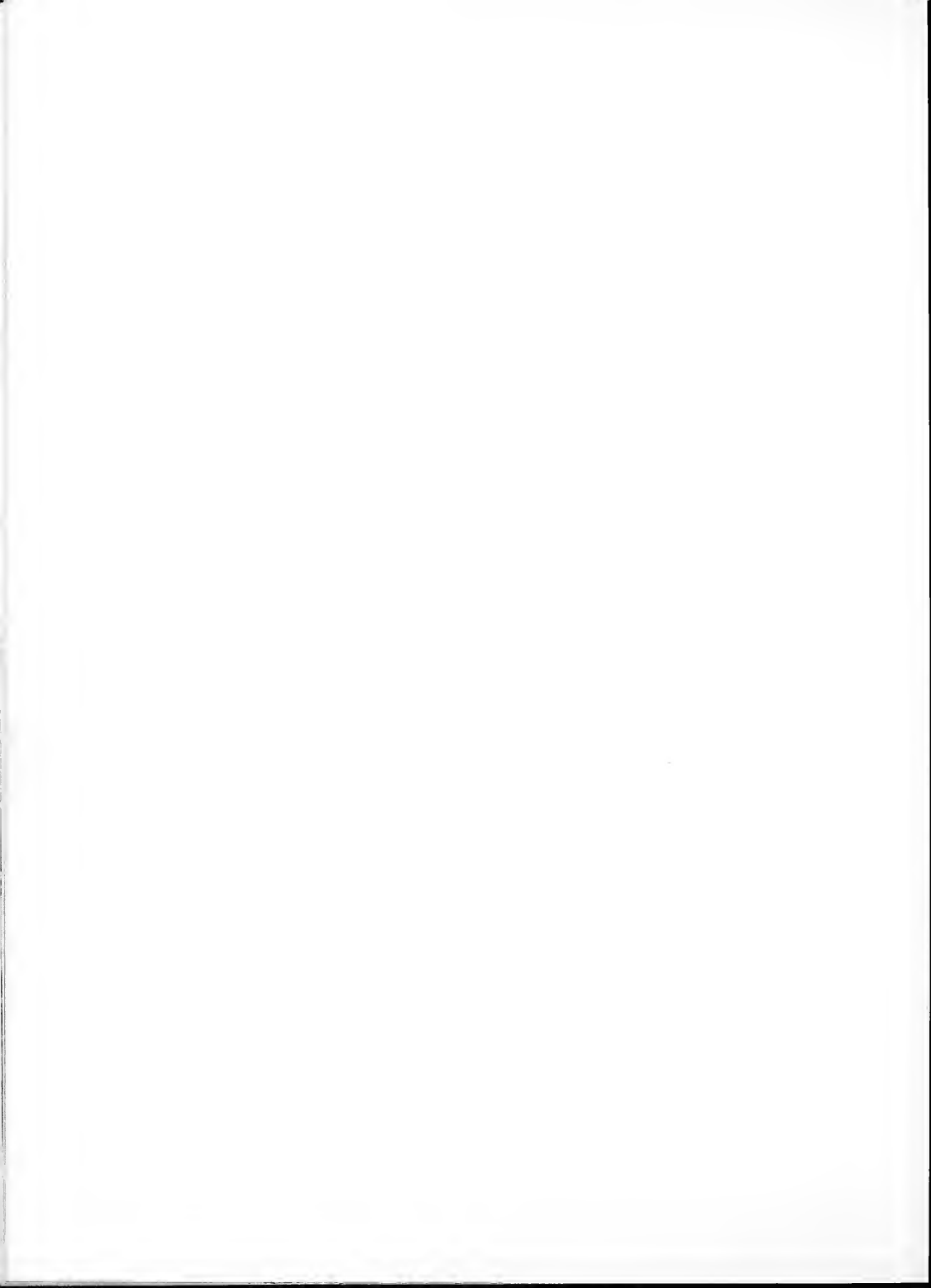


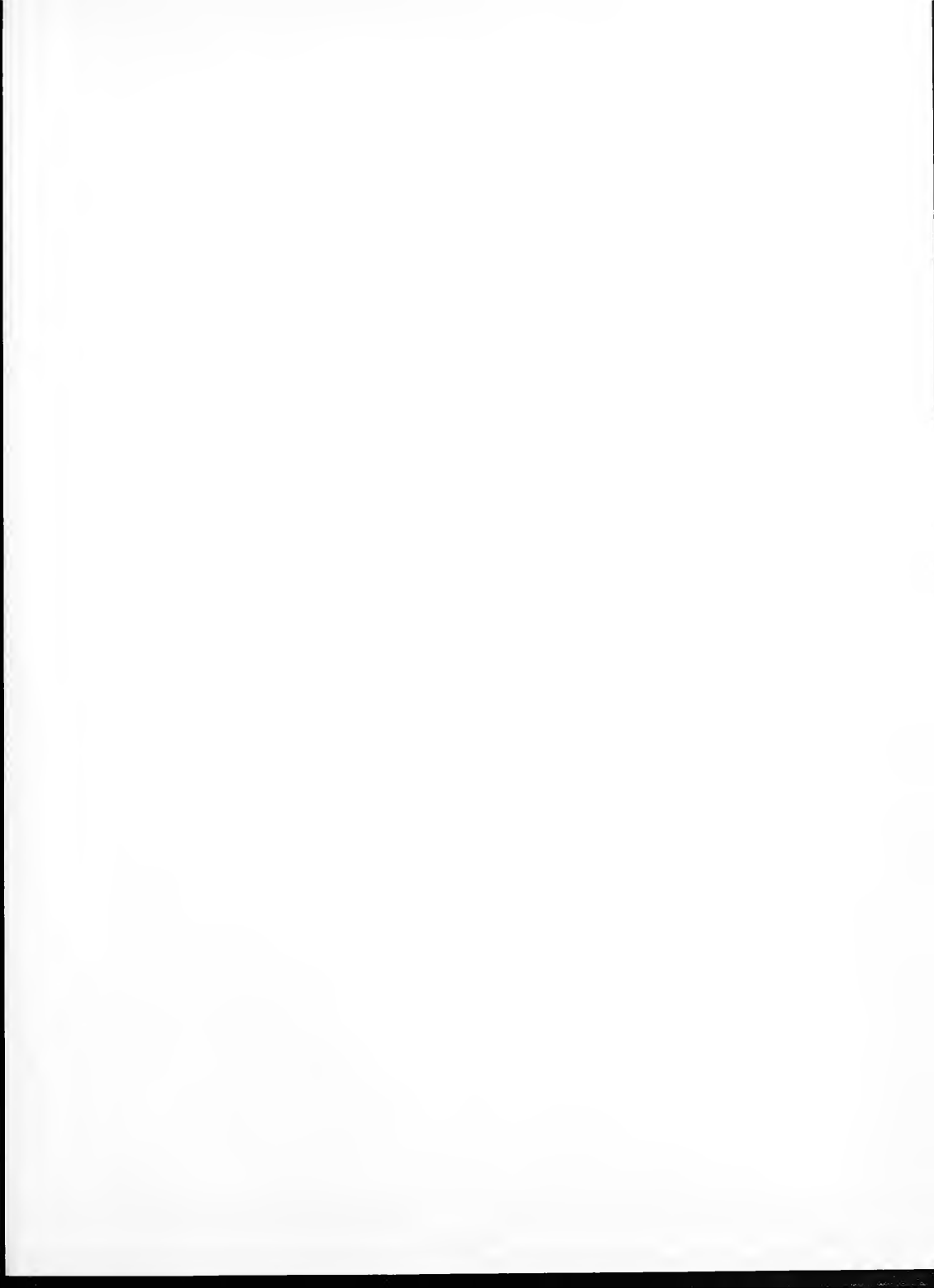
The class together for the last time













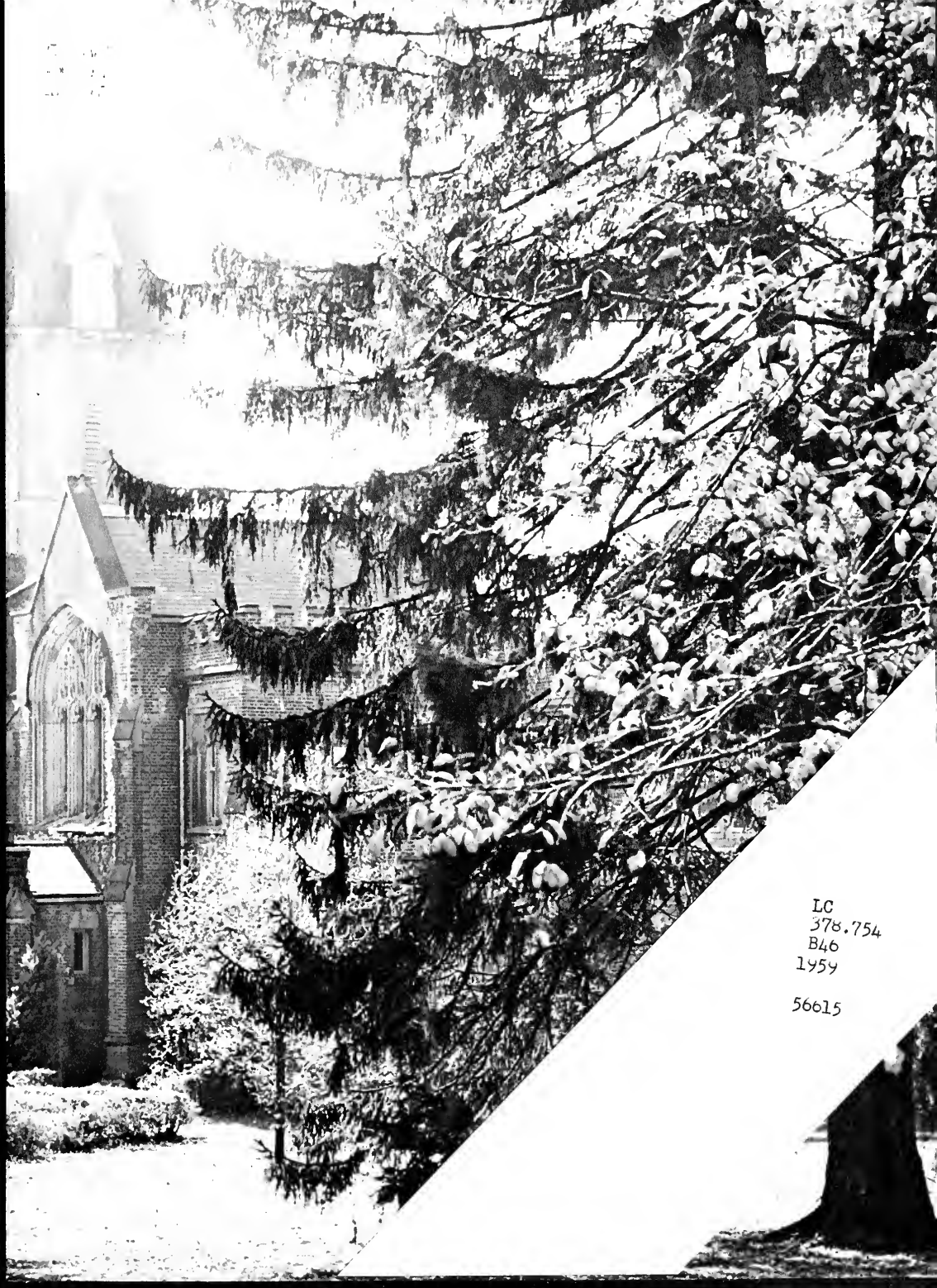
**TAYLOR PUBLISHING COMPANY**

"The World's Best Yearbooks Are Taylor-made"

YEARBOOKS







LC  
378.754  
B46  
1959  
56615

